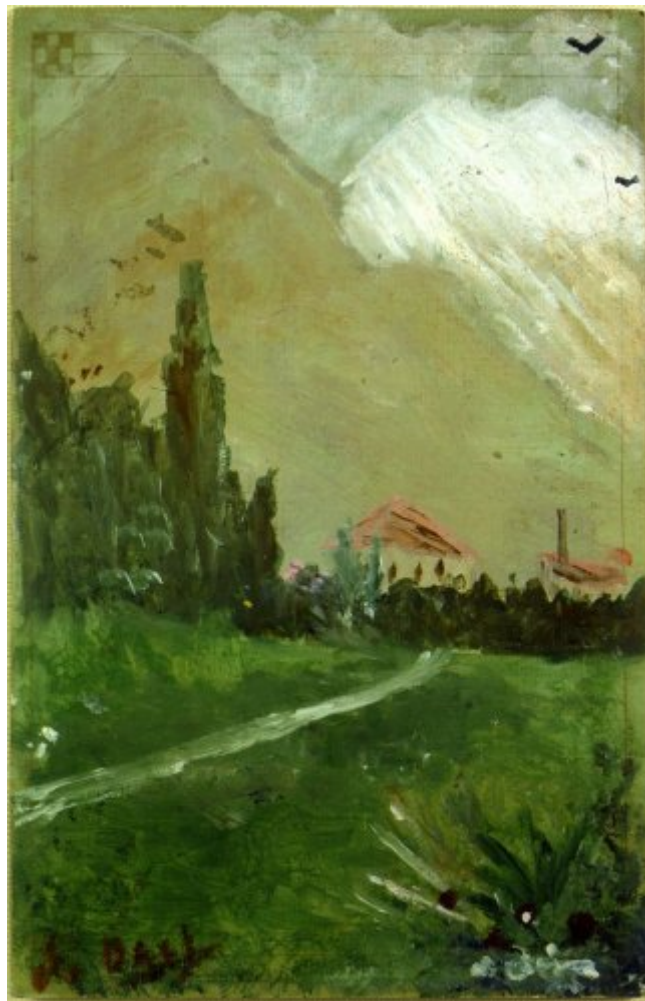




FUNDACIÓ
GALA-SALVADOR DALÍ



© Salvador Dalí, Fundació Gala-Salvador Dalí, Figueres, 2004
USA: © Salvador Dalí Museum Inc., St. Petersburg, FL, 2004

Cat. no. P 1

Landscape

Date:	1910-1914
Technique:	Oil on cardboard
Dimensions:	14 x 9 cm The cardboard is a postcard
Signature:	Signed lower left corner: <i>S.DALI</i>



Location: The Dali Museum, St. Petersburg (Florida)



Provenance

- Paul Éluard, Paris
- Albert Field collection, Astoria (New York)

Observations

We date this painting, and the four following, between the years 1910-1914 since there is insufficient documentation available to give them a more precise date. In this specific case Fleur Cowles and Albert Field date this works of 1910, but we believe, as do other authors, that this date is somewhat early in the artist's production and have therefore situated them between these dates.

Exhibitions

- 1965, New York, Gallery of Modern Art, *Salvador Dalí, 1910-1965*, 18/12/1965 - 13/03/1966, cat. no. 1
- 1982, Tokyo, Isetan Museum of Art, *Rétrospective Salvador Dalí 1982*, 28/02/1982 - 06/04/1982, cat. no. 1
- 1982, Hiroshima, Hiroshima Prefectural Museum of Art, *Rétrospective Salvador Dalí 1982*, 11/06/1982 - 11/07/1982, cat. no. 1
- 1983, Madrid, Museo Español de Arte Contemporáneo, *400 obras de Salvador Dalí del 1914 al 1983*, 15/04/1983 - 29/05/1983, cat. no. 1
- 1989, Stuttgart, Staatsgalerie, *Salvador Dalí, 1904-1989*, 13/05/1989 - 23/07/1989, cat. no. 1
- 1990, Montréal, Musée des Beaux-Arts, *Salvador Dalí*, 27/04/1990 - 29/07/1990, cat. no. 1

Bibliography

- Fleur Cowles, *The Case of Salvador Dalí*, Little, Brown, Boston, Toronto, 1959, n. p.
- Manuel del Arco, Salvador Dalí, *Salvador Dalí, Ich und die Malerei*, Die Arche, Zürich, 1959, il. 5
- *Salvador Dalí, 1910-1965*, The Foundation for Modern Art, New York, 1965, p. 21
- Luis Romero, *Todo Dalí en un rostro*, Blume, Barcelona, Madrid, 1975, p. 12
- *Salvador Dalí: retrospektive, 1920-1980*, Prestel, München, 1980, p. 418
- *La Vie publique de Salvador Dalí*, Centre Georges Pompidou, Musée National d'Art moderne, Paris, 1980, p. 5
- *Rétrospective Salvador Dalí 1982*, Edition Art Life, [S.I.], 1982, n. p.
- *400 obras de Salvador Dalí de 1914 a 1983*, Obra Cultural de la Caixa de Pensions, [Madrid], 1983, p. 16
- *Salvador Dalí, 1904-1989*, Gerd Hatje, Stuttgart, 1989, p. 10
- *Salvador Dalí*, Musée des Beaux-Arts, Montréal, 1990, p. 33
- Luis Romero, *PsicoDálico Dalí*, Mediterranea, Barcelona, 1991, p. 10
- Robert Descharnes, Gilles Néret, *Salvador Dalí, 1904 -1989*, Benedikt Taschen, Köln, 1994, p. 12
- Montse Gisbert, *Salvador Dalí, pinta'm un somni*, Serres, Barcelona, 2003, n. p.
- Ricard Mas Peinado, *Universdalí*, Lunweg, Barcelona, Madrid, 2003, p. 83
- Silvia Borghesi, *Dalí*, Electa, Milán, 2004, p. 10
- Georges Beauté, *Little Dalí a l'escola*, Philippe Delécluse, Escaldes-Engordany (Principat d'Andorra), 2005, p. 16
- Rafael Santos Torroella, *El Primer Dalí, 1918-1929 : catálogo razonado*, IVAM Institut Valencià d'Art Modern, Generalitat Valenciana. Conselleria de Cultura, Educació i Esport, Publicaciones, [València], [València], [Madrid], 2005, p. 35
- Torsten Otte, *Salvador Dalí : Eine Biographie mit Selbstzeugnissen des Künstlers*, Königshausen & Neumann, Würzburg, 2006, p. 17
- Montse Aguer i Teixidor, *Los tesoros de Salvador Dalí*, Librería Universitaria, Barcelona, 2009, p. 10



Reproduction Rights

The copyright on Salvador Dalí's works, included those that are reproduced in this Web page, is held by the Spanish State and has been granted in exclusivity to the Fundació Gala-Salvador Dalí.

Pursuant to intellectual property laws in force, the total or partial reproduction, distribution, transformation, public communication, interactively making available to the public, as well as any other exploitation, by any means, of the works included in this Web page is prohibited.

Any exploitation of Salvador Dalí's works is subject to the prior application and clearance of the relevant licence issued by VEGAP (tel. 91 532 66 32 and 93 201 03 31 ; www.vegap.es). Copyright infringement will be prosecuted according to Laws.