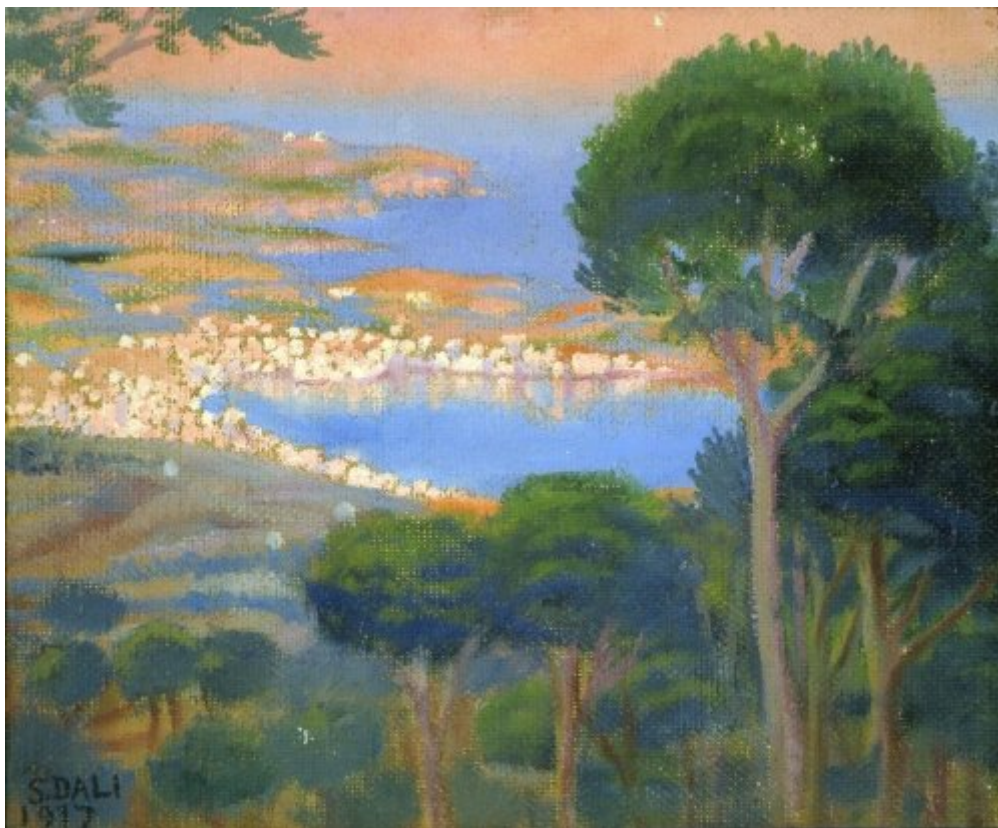




FUNDACIÓ
GALA-SALVADOR DALÍ



© Salvador Dalí, Fundació Gala-Salvador Dalí, Figueres, 2004 USA: © Salvador Dalí Museum Inc., St. Petersburg, FL, 2004

Cat. no. P 10

Paisatge de Cadaqués (Landscape of Cadaqués)

View of Cadaqués Seen from Mount Pení

Date:	c. 1921
Technique:	Oil on canvas
Dimensions:	39.4 x 48.3 cm
Signature:	Signed and dated lower left corner: <i>S.DALI / 1917</i>
Location:	The Dali Museum, St. Petersburg (Florida)



Provenance

- Enric Morera
- Juan Agustí Juncá, Madrid
- E. and A. Reynolds Morse, Cleveland (Ohio)

Observations

This painting was first exhibited in 1925 although it had been signed and dated in 1917 by the artist himself. Despite the signature, a technical and stylistic study of the work shows that it was painted after that date and we believe that it may have been carried out in the year 1921.

Exhibitions

- 1925, Barcelona, Galeries Dalmau, *Exposició S. Dalí*, 14/11/1925 - 27/11/1925, cat. no. 7
- 2004, Venezia, Palazzo Grassi, *Dalí*, 12/09/2004 - 16/01/2005, cat. no. 13
- 2005, Philadelphia, The Philadelphia Museum of Art, *Dalí*, 16/02/2005 - 15/05/2005, cat. no. 13

Bibliography

- *Dalí par Dalí*, Draeger, [Paris], 1970, p. 24 (detail)
- A. Reynolds Morse, *A Dalí primer*, The Reynolds Morse Foundation, Cleveland [Ohio], 1970, p. 17
- *Ninety-three oils by Salvador Dalí : 1917-1970*, The Salvador Dalí Museum, Cleveland, 1973, p. 127
- *Salvador Dalí ... a panorama of his art*, The Salvador Dalí Museum, Cleveland, 1974, p. 9, p. 127
- Josep Vallès i Rovira, *Dalí delit Empordà*, Carles Vallès, Figueres, 1987, p. 64
- *Dalí: the Salvador Dalí museum collection*, Bulfinch, Boston. Toronto. London, 1991, il. 1
- Robert Descharnes, Gilles Néret, *Salvador Dalí, 1904 -1989*, Benedikt Taschen, Köln, 1994, p. 46
- Marco Di Capua, *Dalí*, Librairie Gründ, Paris, 1994, p. 42
- Kenneth Wach, *Salvador Dalí : masterpieces from the collection of the Salvador Dalí Museum*, Harry N. Abrams, Salvador Dalí Museum, New York, St. Petersburg, Florida, 1996, p. 33
- Robert Goff, *The Essential Salvador Dalí*, Harry N. Abrams, New York, 1998, p. 12
- Robert S. Lubar, *The Salvador Dalí Museum collection*, Bulfinch, Boston - New York - London, 2000, p. 1
- Michael Elsohn Ross, *Salvador Dalí and the surrealists, their lives and ideas : 21 activities*, Chicago Review Press, Chicago, 2003, p. 13
- *Dalí*, Bompiani, [Milà], 2004, p. 41
- M^a Mercè Riera i Arnijas, *Dalí*, Ciro, [Barcelona], 2008, p. 35 (detail), p. 141
- Catherine Ingram, Andrew Rae (il.), *This is Dalí*, Laurence King Publishing, London, 2014, p. 17
- *Salvador Dalí*, Yomiuri Shimbun, Culture Promotion Department, Tokyo, 2016, p. 55



Reproduction Rights

The copyright on Salvador Dalí's works, included those that are reproduced in this Web page, is held by the Spanish State and has been granted in exclusivity to the Fundació Gala-Salvador Dalí.

Pursuant to intellectual property laws in force, the total or partial reproduction, distribution, transformation, public communication, interactively making available to the public, as well as any other exploitation, by any means, of the works included in this Web page is prohibited.

Any exploitation of Salvador Dalí's works is subject to the prior application and clearance of the relevant licence issued by VEGAP (tel. 91 532 66 32 and 93 201 03 31 ; www.vegap.es). Copyright infringement will be prosecuted according to Laws.