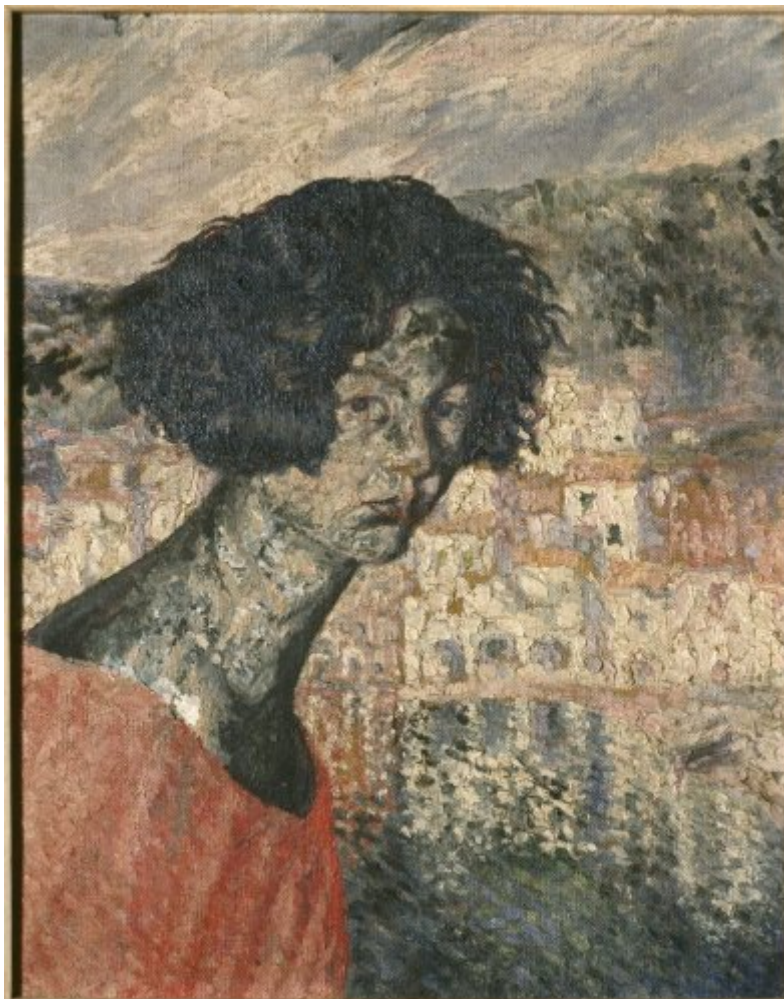




FUNDACIÓ
GALA-SALVADOR DALÍ



© Salvador Dalí, Fundació Gala-Salvador Dalí, Figueres, 2007

Cat. no. P 1021

Untitled

Portrait of the Artist's Sister

Date:	c. 1920
Technique:	Oil on canvas
Dimensions:	52.2 x 41 cm
Signature:	Unsigned and undated
Location:	Private collection



Observations

The oil painting "Composition" (catalogue number 1022) is on the other side.

Exhibitions

- 2007, Figueres, Teatre-Museu Dalí, *Préstec temporal a la Fundació Gala-Salvador Dalí per a l'exposició "Homenatge a Anna Maria Dalí"*, 17/07/2007 - 19/09/2007

Related works



Cat. no. P 1022

Untitled. Composition

c. 1920

Reproduction Rights

The copyright on Salvador Dalí's works, included those that are reproduced in this Web page, is held by the Spanish State and has been granted in exclusivity to the Fundació Gala-Salvador Dalí.

Pursuant to intellectual property laws in force, the total or partial reproduction, distribution, transformation, public communication, interactively making available to the public, as well as any other exploitation, by any means, of the works included in this Web page is prohibited.

Any exploitation of Salvador Dalí's works is subject to the prior application and clearance of the relevant licence issued by VEGAP (tel. 91 532 66 32 and 93 201 03 31 ; www.vegap.es). Copyright infringement will be prosecuted according to Laws.