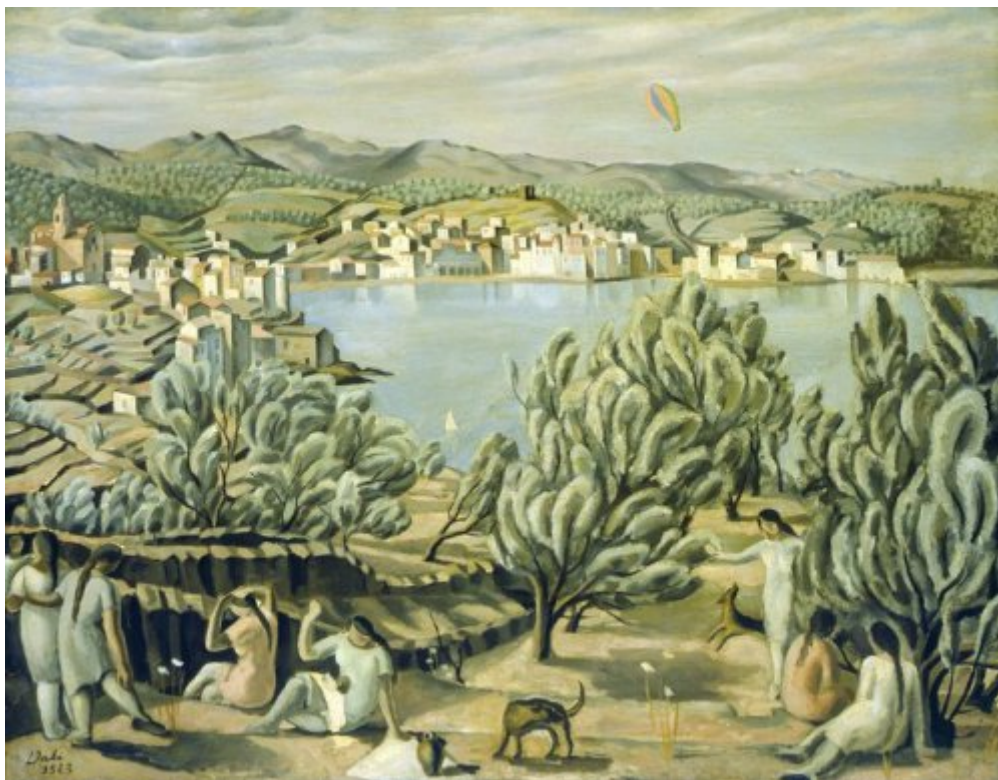




FUNDACIÓ
GALA-SALVADOR DALÍ



© Salvador Dalí, Fundació Gala-Salvador Dalí, Figueres, 2004 USA: © Salvador Dalí Museum Inc., St. Petersburg, FL, 2004

Cat. no. P 116

Cadaqués

Date:	1923
Technique:	Oil on canvas
Dimensions:	96.5 x 127 cm
Signature:	Signed and dated lower left corner: <i>Dali / 1923</i>
Location:	The Dali Museum, St. Petersburg (Florida)



Provenance

- Joan Subias Galter
- Kaplan Gallery, London
- E. and A. Reynolds Morse, Cleveland (Ohio)

Exhibitions

- 1965, New York, Gallery of Modern Art, *Salvador Dalí, 1910-1965*, 18/12/1965 - 13/03/1966, cat. no. 12
- 2000, St. Petersburg, Florida, Salvador Dalí Museum, *James Rosenquist: paintings*, 29/04/2000 - 10/09/2000, cat. no. 21
- 2006, Cleveland, Ohio. USA, Cleveland Museum of Art, *Barcelona and Modernity: Picasso, Gaudí, Miró, Dalí*, 15/10/2006 - 07/01/2007, cat. no. 6:23
- 2009, Melbourne, National Gallery of Victoria, *Salvador Dalí : liquid desire*, 13/06/2009 - 04/10/2009, no reference

Bibliography

- A. Oriol Anguera, *Mentira y verdad de Salvador Dalí*, Cobalto, Barcelona, 1948, p. III
- Juan Antonio Gaya Nuño, *Salvador Dalí*, Omega, Barcelona, 1950, il. 2
- Salvador Dalí, *Impressions and private memoirs of Salvador Dalí : january 1920*, The Reynolds Morse Foundation, Cleveland, Ohio, 1962, p. 63
- *The Salvador Dalí museum : souvenir catalogue*, The Reynolds-Morse Foundation, Cleveland [Ohio], 1962, p. 9
- *Salvador Dalí, 1910-1965*, The Foundation for Modern Art, New York, 1965, p. 23
- Max Gérard, *Dalí de Draeger*, Blume, Barcelona, 1968, il. 229 (detail)
- A. Reynolds Morse, *A Dalí primer*, The Reynolds Morse Foundation, Cleveland [Ohio], 1970, p. 15
- "Josep Pla i Salvador Dalí coincidències entre dos empordanesos (pàg. 2)", *Revista de Palafrugell*, 01/10/1970, Palafrugell, p. 4
- Antonio Fernández Molina, *Dalí*, Dirección General de Bellas Artes, Madrid, 1971, p. 50
- *Ninety-three oils by Salvador Dalí : 1917-1970*, The Salvador Dali Museum, Cleveland, 1973, p. 135
- *Poetic homage to Gala-Salvador Dalí*, The Reynolds Morse Foundation, Cleveland, 1973, p. 24
- Jacques Dopagne, *Dalí*, Fernand Hazan, Paris, 1974, il. 2 (detail)
- *Salvador Dalí ... a panorama of his art*, The Salvador Dali Museum, Cleveland, 1974, p. 23, p. 135
- *Hommage à Dalí*, Vilo, Paris, 1980, p. 75
- Conroy Maddox, *Dalí*, Benedick Taschen, Köln, 1983, p. 11
- Conroy Maddox, *Dalí*, Newness Books, Feltham [Middlesex], 1983, p. 11
- Sarane Alexandrian, *Dalí*, Fernand Hazan, Paris, 1985, il. 2
- Salvador Dalí, Louis Pauwels, *The Passions according to Dalí*, The Salvador Dali Museum, St. Petersburg [Florida], 1985, n. p.
- *Salvador Dalí, 1904-1989*, Gerd Hatje, Stuttgart, 1989, p. 23
- *Dalí: the Salvador Dalí museum collection*, Bulfinch, Boston. Toronto. London, 1991, il. 15
- A. Reynolds Morse, *Dalí's animal crackers*, Salvador Dalí Museum, St. Petersburg, Florida, 1993, p. 75 (2 details)
- Mike Venezia, *Salvador Dalí*, Children Press, Chicago, 1993, p. 14
- Robert Descharnes, Gilles Néret, *Salvador Dalí, 1904 -1989*, Benedikt Taschen, Köln, 1994, p. 65
- Ralf Schiebler, *Dalí : genius, obsession and lust*, Prestel, Munich - New York, 1996, p. 17
- Haim Finkelstein, *Salvador Dalí's art and writing, 1927-1942 : the metamorphoses of Narcissus*, Cambridge University Press, Cambridge, 1996, p. 12
- *Togores, classicisme i renovació : obra de 1914 a 1931*, Museo Nacional Centro de Arte Reina Sofía, Museu Nacional d'Art de Catalunya, Madrid, Barcelona, 1997, p. 45 (detail)
- *James Rosenquist: paintings | James Rosenquist: selects Dalí*, Salvador Dalí Museum, St. Petersburg, Florida, 2000, p. 49



- Robert S. Lubar, *The Salvador Dalí Museum collection*, Bulfinch, Boston - New York - London, 2000, p. 20
- Ricard Mas Peinado, *Universdalí*, Lunweg, Barcelona, Madrid, 2003, p. 95
- William Jeffett, Joan Fontcuberta, *Imaginary gardens : mapping Dalí's landscapes*, Salvador Dalí Museum exhibition series, St. Petersburg, Florida, 2003, p. 22
- *Naturaleza & arte. Gaudí, Miró, Dalí*, Sociedad Estatal para Exposiciones Internacionales, [Madrid], 2005, p. 80
- Rafael Santos Torroella, *El Primer Dalí, 1918-1929 : catálogo razonado*, IVAM Institut Valencià d'Art Modern, Generalitat Valenciana. Conselleria de Cultura, Educació i Esport, Publicaciones, [València], [València], [Madrid], 2005, p. 181
- Marta Luna, Toni Matas, *Dalí i els altres secrets*, Distribucions d'Art Surrealista, Figueres, 2006, p. 48
- William H. Robinson, Jordi Falgàs, Carmen Belén Lord, *Barcelona and Modernity: Picasso, Gaudí, Miró, Dalí*, Cleveland Museum of Art, Yale University Press, Cleveland, New Haven & London, 2006, p. 263
- M^a Mercè Riera i Arnijas, *Dalí*, [Barcelona], 2008, p. 46, p. 141
- *Salvador Dalí : liquid desire*, National Gallery of Victoria, Fundació Gala- Salvador Dalí, The Salvador Dalí Museum, Melbourne, Figueres, St. Petersburg (Florida), 2009, p. 68
- *Dalí, Lorca y la Residencia de Estudiantes*, Sociedad Estatal de Conmemoraciones Culturales, [Madrid], 2010, p. 120
- Ralf Schiebler, *Dalí : the reality of dreams*, Prestel, Munich, London, New York, 2011, p. 17
- Joaquim Nadal i Farreras, *Joan Subias Galter (1897-1984). Dues vides i una guerra*, Institut d'Estudis Catalans, Barcelona, 2016, p. 213

Reproduction Rights

The copyright on Salvador Dalí's works, included those that are reproduced in this Web page, is held by the Spanish State and has been granted in exclusivity to the Fundació Gala-Salvador Dalí.

Pursuant to intellectual property laws in force, the total or partial reproduction, distribution, transformation, public communication, interactively making available to the public, as well as any other exploitation, by any means, of the works included in this Web page is prohibited.

Any exploitation of Salvador Dalí's works is subject to the prior application and clearance of the relevant licence issued by VEGAP (tel. 91 532 66 32 and 93 201 03 31 ; www.vegap.es). Copyright infringement will be prosecuted according to Laws.