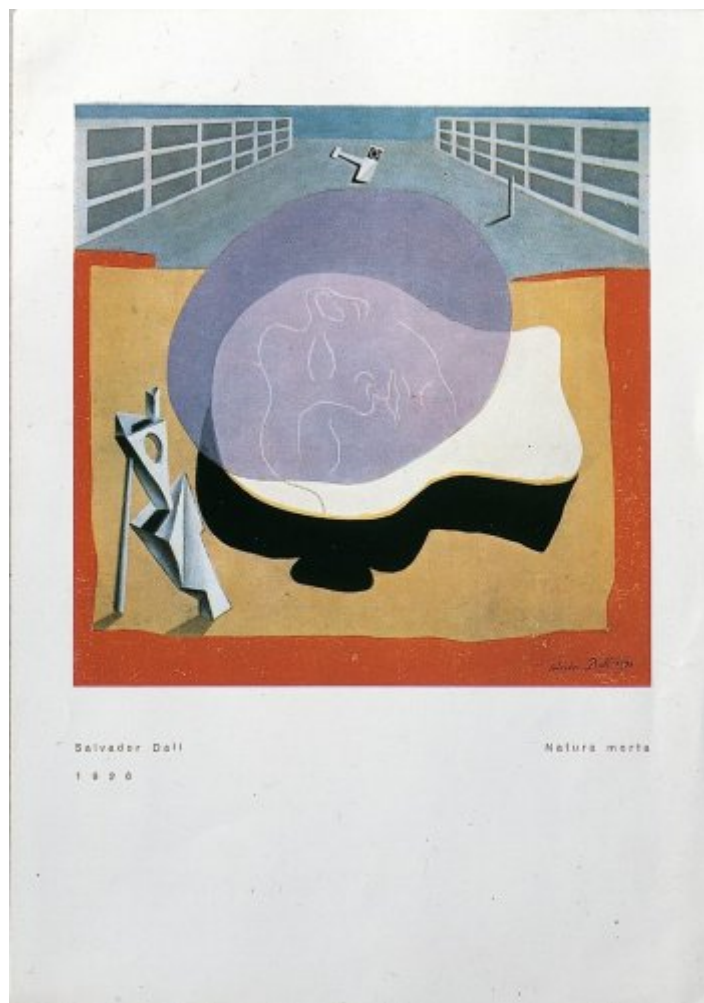




FUNDACIÓ  
GALA-SALVADOR DALÍ



© Salvador Dalí, Fundació Gala-Salvador Dalí, Figueres, 2004

**Cat. no. P 172**

***Natura morta. "Invitació a la son"* (Still Life. "Invitation to Dream")**

**Date:** 1926

**Technique:** Oil on canvas

**Dimensions:** 99 x 99 cm

**Signature:** Signed and dated lower right corner: *Salvador Dalí 1926*

**Location:** Unknown



## Observations

The image reproduced is not that of the painting itself, but of the plate illustration in the catalogue of the "Salvador Dalí Exhibition" held at the Dalmau Galleries in Barcelona from December 31st 1926 to January 14th 1927. The image shown in the books cited in the bibliography also corresponds to the plate illustration.

## Exhibitions

- 1926, Barcelona, Galeries Dalmau, *Exposició S. Dalí*, 31/12/1926 - 14/01/1927, cat. no. 17, il.

## Bibliography

- Antonina Rodrigo, *Lorca, Dalí: una amistad traicionada*, Planeta, Barcelona, 1981, p. 81
- Rafael Santos Torroella, *La Miel es más dulce que la sangre : las épocas lorquiana y freudiana de Salvador Dalí*, Seix Barral, Barcelona, 1984, p. 112
- Ian Gibson, *Federico García Lorca*, Grijalbo, Barcelona, 1987, il. 42
- *Salvador Dalí, 1904-1989*, Gerd Hatje, Stuttgart, 1989, p. 1, p. 51
- *Los Dalís de Dalí: colección del museo nacional centro de arte reina Sofía*, Centro cultural, Arte contemporáneo, México D. F., 1990, p. 57
- *Avantguardes a Catalunya*, Fundació Caixa de Catalunya, Barcelona, 1992, p. 306, p. 295
- Rafael Santos Torroella, *Dalí resident*, Residencia de Estudiantes - CSIC, [Madrid], 1992, p. 40
- Rafael Santos Torroella, *"Los Putrefactos" de Dalí y Lorca : historia y antología de un libro que no pudo ser*, Consejo Superior de Investigaciones Científicas, Amigos de la Residencia de Estudiantes, [Madrid], 1995, p. 33
- *Dalí. Arquitectura*, Fundació Gala-Salvador Dalí, Fundació Caixa de Catalunya, [Figueres], [Barcelona], 1996, p. 195
- *Salvador Dalí: la vita è sogno*, Electa, [S.l.], 1996, p. 39
- *Salvador Dalí. Doeken en aquarellen uit de Albaretto Collection = Salvador Dalí. Toiles et aquarelles de la Collection Albaretto = Salvador Dalí. Canvas and water-colours from the Albaretto Collection*, Electa, Milan, 1997, p. 79
- Ian Gibson, *The Shameful life of Salvador Dalí*, Faber and Faber, London, 1997, il. VIII
- Fèlix Fanés, *Salvador Dalí, la construcción de la imagen : 1925-1930*, Electa, [Madrid], 1999, p. 59
- Ian Gibson, *Lorca-Dalí : el amor que no pudo ser*, Plaza & Janés, Barcelona, 1999, p. 3
- *Paris Barcelone, de Gaudí a Miró*, Réunion des Musées Nationaux, Museu Picasso, Paris, Barcelona, 2001, p. 434
- Ricard Mas Peinado, *Universdalí*, Lunwerg, Barcelona, Madrid, 2003, p. 65
- *Huellas dalinianas*, Sociedad Estatal de Conmemoraciones Culturales, Madrid, 2004, p. 38
- *Salvador Dalí i Federico García Lorca : la persistència de la memòria*, Viena, Generalitat de Catalunya. Departament de Cultura, Barcelona, Barcelona, 2004, p. 52
- Fèlix Fanés, *La Pintura y sus sombras : cuatro estudios sobre Salvador Dalí*, Museo de Teruel, Teruel, 2004, p. 20
- Rafael Santos Torroella, *El Primer Dalí, 1918-1929 : catálogo razonado*, IVAM Institut Valencià d'Art Modern, Generalitat Valenciana. Conselleria de Cultura, Educació i Esport, Publicacions, [València], [València], [Madrid], 2005, p. 307
- Robin Adèle Greeley, *Surrealism and the Spanish civil war*, Yale University Press, New Haven & London, 2006, p. 70
- *Dalí, Lorca y la Residencia de Estudiantes*, Sociedad Estatal de Conmemoraciones Culturales, [Madrid], 2010, p. 146



## Reproduction Rights

The copyright on Salvador Dalí's works, included those that are reproduced in this Web page, is held by the Spanish State and has been granted in exclusivity to the Fundació Gala-Salvador Dalí.

Pursuant to intellectual property laws in force, the total or partial reproduction, distribution, transformation, public communication, interactively making available to the public, as well as any other exploitation, by any means, of the works included in this Web page is prohibited.

Any exploitation of Salvador Dalí's works is subject to the prior application and clearance of the relevant licence issued by VEGAP (tel. 91 532 66 32 and 93 201 03 31 ; [www.vegap.es](http://www.vegap.es)). Copyright infringement will be prosecuted according to Laws.