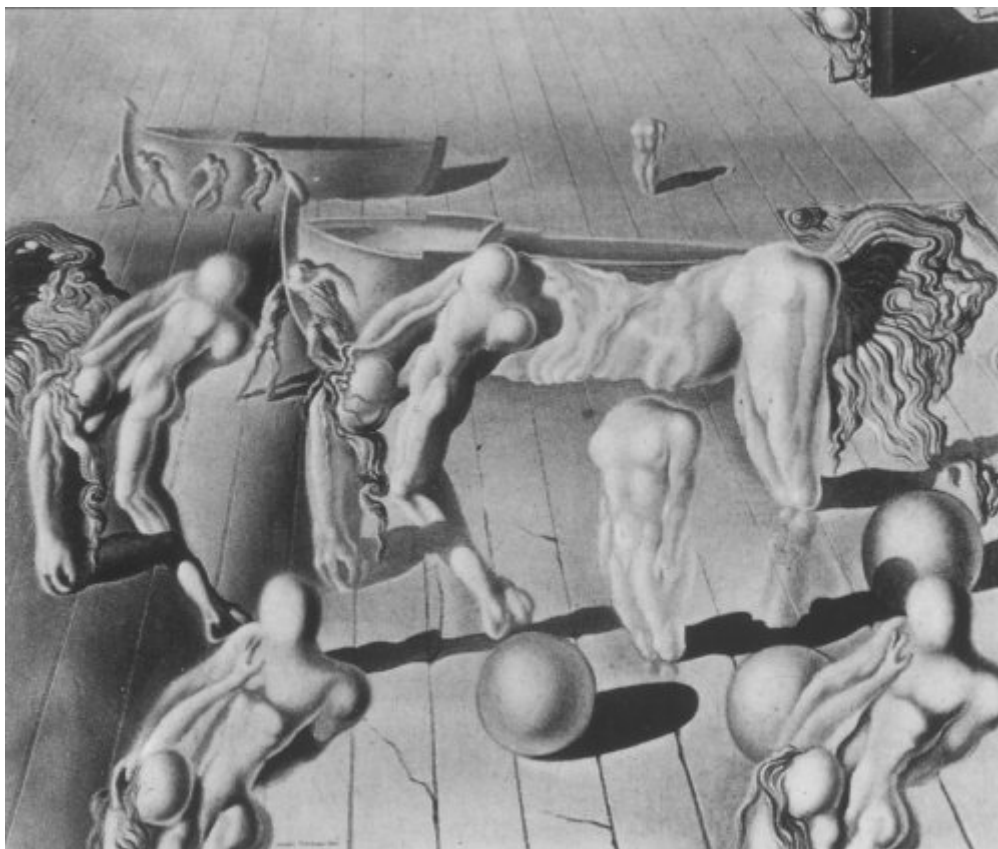




FUNDACIÓ  
GALA-SALVADOR DALÍ



© Salvador Dalí, Fundació Gala-Salvador Dalí, Figueres, 2004

**Cat. no. P 246**

## ***Dormeuse cheval lion invisibles (Invisible Sleeping Woman Horse Lion)***

|                      |                                                                                                  |
|----------------------|--------------------------------------------------------------------------------------------------|
| <b>Date:</b>         | 1930                                                                                             |
| <b>Technique:</b>    | Oil on canvas                                                                                    |
| <b>Dimensions:</b>   | 52 x 60 cm                                                                                       |
| <b>Signature:</b>    | Signed and dated lower center-left: <i>a Gala Salvador Dali / 1930</i>                           |
| <b>Inscriptions:</b> | Inscribed lower center-left: <i>a Gala Salvador Dali / 1930 / Dormeuse cheval lion invisible</i> |
| <b>Location:</b>     | Private collection, Paris                                                                        |



## Provenance

- Viscountess Marie-Laure de Noailles
- Galerie Vignon, Paris

## Exhibitions

- 1931, Paris, Pierre Colle, *Exposition Salvador Dalí*, 03/06/1931 - 15/06/1931, cat. no. 7
- 1956, Knokke Le Zoute, Casino de Knokke Le Zoute, *Salvador Dalí*, 01/07/1956 - 10/09/1956, cat. no. 18
- 1968, Knokke - Le Zoute, Casino Communal. XXI<sup>e</sup> Festival Belge d'Été, *Trésors du surréalisme*, 01/06/1968 - 30/09/1968, cat. no. 30
- 1970, Rotterdam, Museum Boymans-van Beuningen, *Dalí*, 21/11/1970 - 10/01/1971, cat. no. 12
- 1980, London, The Tate Gallery, *Salvador Dalí*, 14/05/1980 - 29/06/1980, cat. no. 53
- 1991, Paris, Centre Georges Pompidou, *André Breton, la beauté convulsive*, 25/04/1991 - 26/08/1991, no reference
- 2012, Paris, Centre Pompidou, *Dalí*, 21/11/2012 - 25/03/2013, p. 126

## Bibliography

- Salvador Dalí, *La Femme visible*, Éditions Surréalistes, Paris, 1930, p. 13
- Pierre Loeb, *Voyages à travers la peinture*, Bordas, Paris, 1946, pl. XLVI
- Anthony Denney, "The Painting Gallery", *Vogue*, 01/08/1950, Greenwich, Conn., p. [85] (indirect image) (detail)
- *Salvador Dalí*, Éditions de la Connaissance, Bruxelles, 1956, p. 24
- Lo Duca, *A history of eroticism*, Jean-Jacques Pauvert, Paris, 1961, p. 195
- Guillermo de Torre, *Minoría y masas en la cultura y el arte contemporáneos*, EDHASA, Barcelona - Buenos Aires, 1963, p. 363
- *Schatten van het surrealisme = Trésors du surréalisme*, André De Rache, Bruxelles, 1968, p. 37
- *Dalí*, Museum Boymans-van Beuningen, Rotterdam, 1970, il. 12
- Patrick Waldberg, *Les Demeures d'hypnos*, Éditions de la Différence, Paris, 1976, p. 279
- André Breton, *Le Surréalisme et la peinture*, Gallimard, [Paris], 1979, p. 74
- *Salvador Dalí: rétrospective, 1920-1980*, Centre Georges Pompidou, Musée National d'Art moderne, Paris, 1979, p. 248
- Salvador Dalí, *Si. La rivoluzione paranoico-critica. L'arcangelismo scientifico*, Rizzoli, Milano, 1980, p. 38
- Josep Pla, *Salvador Dalí (il.)*, *Obres de museu*, DASA, Figueres, 1981, p. 60
- Dawn Ades, *Dalí and surrealism*, Harper & Row, New York, 1982, p. 125
- *Entender la pintura : Dalí*, Orbis - Fabri, Barcelona, 1989, p. 9
- Luis Romero, *PsicoDálico Dalí*, Mediterranea, Barcelona, 1991, p. 65
- *André Breton, la beauté convulsive*, Centre Georges Pompidou, Paris, 1991, p. 282
- A. Reynolds Morse, *Dalí's animal crackers*, Salvador Dalí Museum, St. Petersburg, Florida, 1993, p. 138 (detail)
- Jaime Brihuela, *Miró y Dalí: los grandes surrealistas*, Anaya, Madrid, 1993, p. 65
- *Salvador Dalí: the early years*, South Bank Centre, [London], 1994, p. 156
- Robert Descharnes, Gilles Néret, *Salvador Dalí, 1904 -1989*, Benedikt Taschen, Köln, 1994, p. 160
- Sarane Alexandrian, *Surrealist art*, Thames and Hudson, London, 1995, p. 98
- Matthew Gale, *Dada & surrealism*, Phaidon, London, 1997, p. 293
- Juan Antonio Ramírez, *Dalí: lo crudo y lo podrido*, A. Machado Libros, Madrid, 2002, p. 74
- José Ferreira, *Dalí - Lacan la rencontre ce que le psychanalyste doit au peintre*, L'Harmattan, [S. l.], 2003, p. 47
- *Dalí*, Bompiani, [Milà], 2004, p. 130
- Patrice Schmitt, *Étude psychanalytique de la création chez Salvador Dalí*, Lacour-Ollé, Nîmes, 2004, il. 2.7
- *Dalí. Noves fronteres de la ciència, l'art i el pensament*, Generalitat de Catalunya. Departament de Cultura, Barcelona, 2005, p. 70
- Agustín Sánchez Vidal, *Salvador Dalí*, Fundación Mapfre. Instituto de Cultura, Madrid, 2007, p. 4-5, p. 52



- *Dalí*, Centre Pompidou, Paris, 2012, p. 126

## Reproduction Rights

The copyright on Salvador Dalí's works, included those that are reproduced in this Web page, is held by the Spanish State and has been granted in exclusivity to the Fundació Gala-Salvador Dalí.

Pursuant to intellectual property laws in force, the total or partial reproduction, distribution, transformation, public communication, interactively making available to the public, as well as any other exploitation, by any means, of the works included in this Web page is prohibited.

Any exploitation of Salvador Dalí's works is subject to the prior application and clearance of the relevant licence issued by VEGAP (tel. 91 532 66 32 and 93 201 03 31 ; [www.vegap.es](http://www.vegap.es)). Copyright infringement will be prosecuted according to Laws.