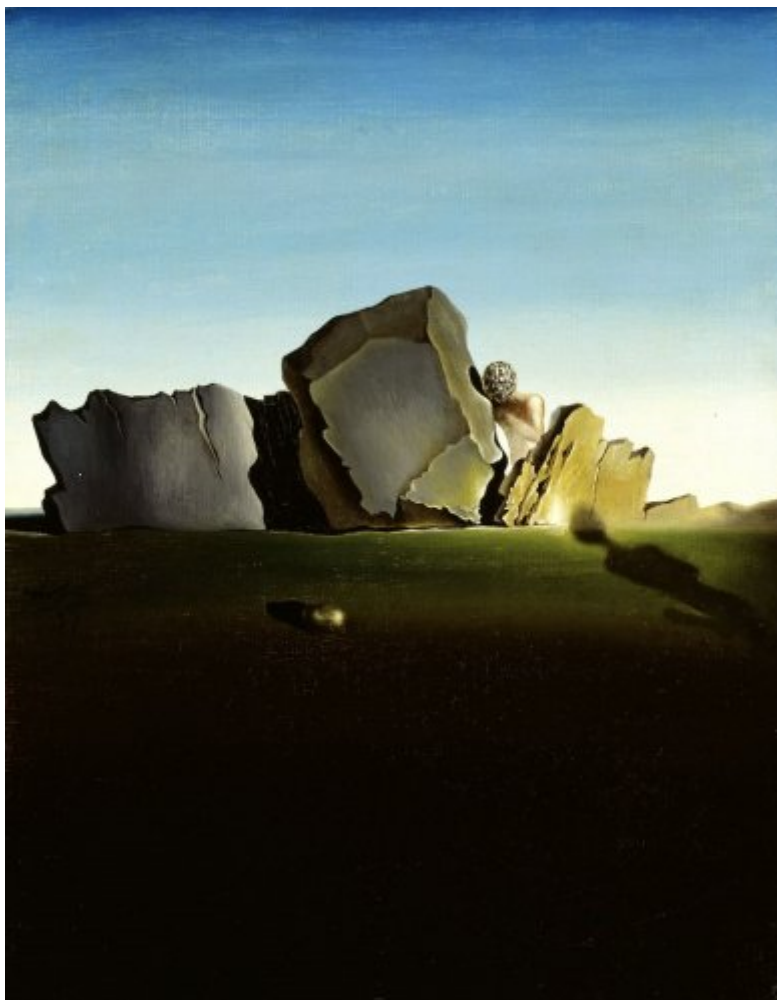




FUNDACIÓ
GALA-SALVADOR DALÍ



© Salvador Dalí, Fundació Gala-Salvador Dalí, Figueres, 2007

Cat. no. P 273

Symbiosis of a Head of Sea Shells

Date:	1931
Technique:	Oil on canvas
Dimensions:	35 x 27 cm
Signature:	Signed and dated left center at a later date: <i>Dalí / 1931</i>



Location: Private collection



Provenance

- Emilio Terry, Paris
- André François Petit, Paris
- Selma and Nesuhi Ertegun Collection, New York

Exhibitions

- 1956, Knokke Le Zoute, Casino de Knokke Le Zoute, *Salvador Dalí*, 01/07/1956 - 10/09/1956, cat. no. 21
- 1979, Paris, Centre Georges Pompidou, Musée National d'Art Moderne, *Salvador Dalí: rétrospective, 1920-1980*, 18/12/1979 - 21/04/1980, cat. no. 89
- 1999, New York, Solomon R. Guggenheim Museum, *Surrealism: two private eyes, the Nesuhi Ertegun and Daniel Filipacchi collections*, 04/06/1999 - 12/09/1999, cat. no. 43

Bibliography

- *Dali par Dali*, Draeger, [Paris], 1970, p. 32-33 (detail)
- Dawn Ades, *Dada and surrealism reviewed*, Arts Council of Great Britain, London, 1978, p. 267
- *Salvador Dalí: rétrospective, 1920-1980*, Centre Georges Pompidou, Musée National d'Art moderne, Paris, 1979, p. 164
- Jacques Baron, *Anthologie plastique du surréalisme*, Filipacchi, Paris, 1980, p. 78 (detail)
- Miguel de Cervantes Saavedra, *Salvador Dalí (il.)*, *Il Fantastico idalgo don Chisciotte della Mancía*, Del Drago, Milano, 1986, p. 162-163 (reversed image)
- Robert Descharnes, Gilles Néret, *Salvador Dalí, 1904 -1989*, Benedikt Taschen, Köln, 1994, p. 169
- Marco Di Capua, *Dalí*, Librairie Gründ, Paris, 1994, p. 116
- *Surrealism: two private eyes, the Nesuhi Ertegun and Daniel Filipacchi collections*, Guggenheim Museum Publications, New York, 1999, p. 97

Reproduction Rights

The copyright on Salvador Dalí's works, included those that are reproduced in this Web page, is held by the Spanish State and has been granted in exclusivity to the Fundació Gala-Salvador Dalí.

Pursuant to intellectual property laws in force, the total or partial reproduction, distribution, transformation, public communication, interactively making available to the public, as well as any other exploitation, by any means, of the works included in this Web page is prohibited.

Any exploitation of Salvador Dalí's works is subject to the prior application and clearance of the relevant licence issued by VEGAP (tel. 91 532 66 32 and 93 201 03 31 ; www.vegap.es). Copyright infringement will be prosecuted according to Laws.