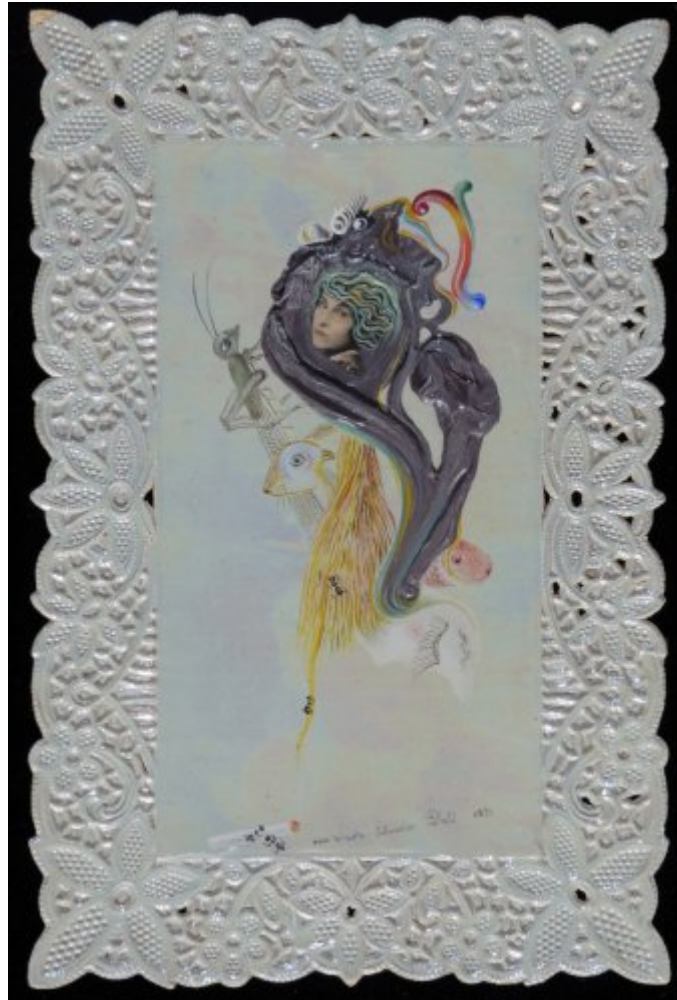




FUNDACIÓ  
GALA-SALVADOR DALÍ



© Salvador Dalí, Fundació Gala-Salvador Dalí, Figueres, 2009

## Cat. no. P 278

### Gala

|                    |  |
|--------------------|--|
| <b>Date:</b>       | 1931   |
| <b>Technique:</b>  | Oil and collage on cardboard   |
| <b>Dimensions:</b> | 13.9 x 9.2 cm  |
| <b>Signature:</b>  | Signed and dated lower center: <i>pour loliveta Salvador Dali 1931</i> |
| <b>Location:</b>   | Fundació Gala-Salvador Dalí, Figueres                                  |



## Provenance

- Gala and Paul Éluard, Paris
- Albert Field, New York
- Private collection
- Auctioned at Sotheby's, New York, November 3rd 2008

## Exhibitions

- 1964, Tokyo, Tokyo Prince Hotel Gallery, *Salvador Dalí : exhibition - Japan 1964*, 08/09/1964 - 18/10/1964, cat. no. 17
- 1965, New York, Gallery of Modern Art, *Salvador Dalí, 1910-1965*, 18/12/1965 - 13/03/1966, cat. no. 36
- 1968, Charleroi, Palais des Beaux-Arts, *Salvador Dalí : peintures, aquarelles, dessins, estampes, etc*, 01/03/1968 - 31/03/1968, cat. no. 8
- 1970, Rotterdam, Museum Boymans-van Beuningen, *Dalí*, 21/11/1970 - 10/01/1971, cat. no. 18
- 1983, Barcelona, Palau Reial de Pedralbes, *400 obres de Salvador Dalí del 1914 al 1983*, 10/06/1983 - 31/07/1983, cat. no. 141
- 1989, Stuttgart, Staatsgalerie, *Salvador Dalí, 1904-1989*, 13/05/1989 - 23/07/1989, cat. no. 70
- 1990, Montréal, Musée des Beaux-Arts, *Salvador Dalí*, 27/04/1990 - 29/07/1990, cat. no. 15
- 1998, Liverpool, Tate Gallery Liverpool, *Salvador Dalí: a mythology*, 21/10/1998 - 31/01/1999, cat. no. 11
- 2004, Barcelona, CaixaForum, *Dalí. Cultura de masses*, 05/02/2004 - 23/05/2004, cat. no. 5

## Bibliography

- Fleur Cowles, *The Case of Salvador Dalí*, Little, Brown, Boston, Toronto, 1959, between pp. 112-113
- *Salvador Dalí : exhibition - Japan 1964*, Mainichi Newspaper, Tokyo, 1964, p. 44
- Brassai, *Conversations avec Picasso*, Gallimard, [Paris], 1964, n. p. (indirect image)
- *Salvador Dalí, 1910-1965*, The Foundation for Modern Art, New York, 1965, p. 46 (detail)
- Max Gérard, *Dalí de Draeger*, Blume, Barcelona, 1968, il. 33
- *Dalí*, Museum Boymans-van Beuningen, Rotterdam, 1970, il. 18
- *Dalí: Gemälde, Zeichnungen, Objekte, Schmuck*, Staatliche Kunsthalle, Baden-Baden, 1971, p. 65
- Salvador Dalí, *Les Dîners de Gala*, Felicie, Inc., New York, 1973, p. 316
- Max Gérard, *Dalí... Dalí... Dalí...*, Harry N. Abrams, New York, 1974, il. 31
- Luis Romero, *Todo Dalí en un rostro*, Blume, Barcelona, Madrid, 1975, p. 291
- Ramón Gómez de la Serna, *Dalí*, Espasa-Calpe, Madrid, 1977, p. 58, p. 247
- Raymond Jean, *Eluard*, Du Seuil, Paris, 1979, p. 52 (indirect image)
- *400 obres de Salvador Dalí del 1914 al 1983*, Obra Cultural de la Caixa de Pensions, [Madrid], 1983, p. 100
- Ignacio Gómez de Liaño, *Dalí*, Polígrafa, Barcelona, 1983, il. 41
- Antonio D. Olano, *Nacimiento, vida, pasión, muerte, resurrección y gloria de Salvador, Domingo, Felipe, Jacinto Dalí Doménech, Cusí y Farrés, Marqués de Dalí y Púbol*, Dyrsa, Madrid, 1985, p. 297
- Whitney Chadwick, *Women artists and the surrealist movement*, Little, Brown and Company, Boston, 1985, p. 57 (indirect image)
- *La Femme et le surréalisme*, Musée cantonal des Beaux-Arts, Lausanne, 1987, p. 57 (indirect image)
- Josep Vallès i Rovira, *Dalí delit Empordà*, Carles Vallès, Figueres, 1987, p. 101
- *Salvador Dalí, 1904-1989*, Gerd Hatje, Stuttgart, 1989, p. 89
- *Salvador Dalí*, Musée des Beaux-Arts, Montréal, 1990, p. 48
- Alessandr Rogin, [*Salvador Dalí : el mite i la realitat*], Republica, Moscou, 1992, p. 41
- Jaime Brihuela, *Miró y Dalí: los grandes surrealistas*, Anaya, Madrid, 1993, p. 66
- A. Reynolds Morse, *Dalí's animal crackers*, Salvador Dalí Museum, St. Petersburg, Florida, 1993, p. 128
- Robert Descharnes, Gilles Néret, *Salvador Dalí, 1904 -1989*, Benedikt Taschen, Köln, 1994, p. 170
- *Visages d'Éluard, photographies*, Parkstone, Musée d'Art et d'Histoire, Bournemouth, Saint-Denis, 1995, p. 140



(indirect image)

- Dawn Ades, Fiona Bradley, *Salvador Dalí: a mythology*, Tate Gallery Publishing, London, 1998, p. 55
- *Dalí: afinitats electives*, Generalitat de Catalunya. Departament de Cultura, Barcelona, 2004, p. 262
- *Dalí. Cultura de masses*, Fundació La Caixa, Fundació Gala-Salvador Dalí, Barcelona, Figueres, 2004, p. 55
- Jean-Louis Gaillemín, *Dalí: master of fantasies*, Harry N. Abrams, New York, 2004, p. 54
- Jean-Louis Gaillemín, *Dalí the impresario of surrealism*, Thames & Hudson, London, 2004, p. 54
- Silvia Borghesi, *Dalí*, Electa, Milán, 2004, p. 55
- *It's all Dalí*, Museum Boijmans Van Beuningen, Rotterdam, 2005, p. 92
- *Dalí atómico*, Fundación Bancaria "la Caixa", [Barcelona], 2018, p. 98

## Reproduction Rights

The copyright on Salvador Dalí's works, included those that are reproduced in this Web page, is held by the Spanish State and has been granted in exclusivity to the Fundació Gala-Salvador Dalí.

Pursuant to intellectual property laws in force, the total or partial reproduction, distribution, transformation, public communication, interactively making available to the public, as well as any other exploitation, by any means, of the works included in this Web page is prohibited.

Any exploitation of Salvador Dalí's works is subject to the prior application and clearance of the relevant licence issued by VEGAP (tel. 91 532 66 32 and 93 201 03 31 ; [www.vegap.es](http://www.vegap.es)). Copyright infringement will be prosecuted according to Laws.