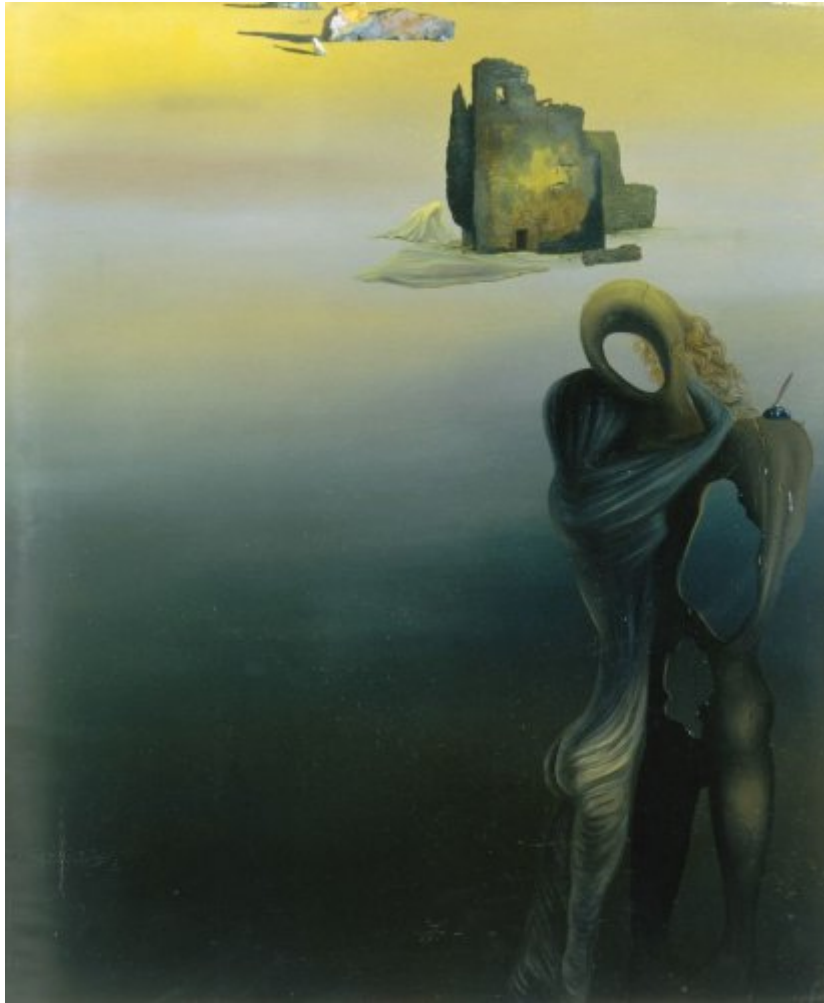




FUNDACIÓ
GALA-SALVADOR DALÍ



© Salvador Dalí, Fundació Gala-Salvador Dalí, Figueres, 2007

Cat. no. P 281

***Gradiva retrouve les ruines anthropomorphes (fantaisie rétrospective)*
(Gradiva Rediscovered the Anthropomorphic Ruins (Retrospective Fantasy))**

Date: c. 1931-32
Technique: Oil on canvas
Dimensions: 65 x 54 cm
Signature: Unsigned and undated



Location: Museo Nacional Thyssen-Bornemisza, Madrid



Provenance

- André Breton, Paris
- Robert de Saint-Jean
- Galerie Agora-Daniel Malingue, Paris
- Galleria Internazionale, Milano
- Thyssen-Bornemisza collection, Lugano

Observations

This painting has traditionally been dated 1931, but if it was in fact painted in 1931, it is strange that Dalí did not show it at his second one-man show at the Galerie Pierre Colle in Paris in 1932. As there are no grounds for dating this work to 1932, we have accepted the two-year interval as valid (See C. Green, *The European Avant-gardes: Art in France and Western Europe 1904-c.1945*. London: Zwemmer, 1995). The painting was shown under the title *Gradiva retrouve les ruines antropomorphes (fantaisie rétrospective)* in the Exposition Salvador Dalí at the Galerie Pierre Colle in Paris in 1933.

Exhibitions

- 1933, Paris, Pierre Colle, *Exposition Salvador Dalí*, 19/06/1933 - 29/06/1933, cat. no. 11
- 1971, Baden-Baden, Staatliche Kunsthalle, *Dalí: Gemälde, Zeichnungen, Objekte, Schmuck*, 29/01/1971 - 28/03/1971, cat. no. 40
- 1980, London, The Tate Gallery, *Salvador Dalí*, 14/05/1980 - 29/06/1980, cat. no. 66
- 1982, National Gallery of Art, Washington D.C., *20th Century Masters: the Thyssen-Bornemisza Collection*, 30/05/1982 - 08/09/1982, cat. no. 41
- 1986, Barcelona, Palau de la Virreina, *Mestres moderns de la col·lecció Thyssen-Bornemisza*, 07/05/1986 - 17/08/1986, cat. no. 92
- 1987, Madrid, Museo Nacional Centro de Arte Reina Sofía, *El Siglo de Picasso*, 29/01/1987 - 13/03/1988, cat. no. 59
- 1989, Humlebaek, Louisiana Museum of Modern Art, *Salvador Dalí*, 16/12/1989 - 11/03/1990, cat. no. 18
- 1989, Stuttgart, Staatsgalerie, *Salvador Dalí, 1904-1989*, 13/05/1989 - 23/07/1989, cat. no. 78
- 1990, Montréal, Musée des Beaux-Arts, *Salvador Dalí*, 27/04/1990 - 29/07/1990, cat. no. 18
- 1995, Milano, Palazzo Forti, Verona, *Dalí, Miró, Picasso e il surrealismo spagnolo*, 29/07/1995 - 22/10/1995, p. 91
- 1996, Barcelona, La Pedrera, *Dalí. Arquitectura*, 19/06/1996 - 25/08/1996, cat. no. 4
- 1997, Madrid, Sala de Exposiciones de la Fundación "la Caixa", *Madrid - Barcelona 1930-1936. La tradición de lo nuevo*, 29/05/1997 - 20/07/1997, p. 176
- 1997, Paris, Musée d'Art Moderne de la Ville de Paris, *Années 30 en Europe : le temps menaçant, 1929-1930*, 20/02/1997 - 25/05/1997, p. 114
- 1998, Liverpool, Tate Gallery Liverpool, *Salvador Dalí: a mythology*, 21/10/1998 - 31/01/1999, cat. no. 12
- 2002, Madrid, Museo Thyssen-Bornemisza, *Dalí: Gradiva*, 21/05/2002 - 08/09/2002, cat. no. 10
- 2003, Milano, Skira, *Modernismo e avanguardia: Picasso, Miró, Dalí e la pittura catalana*, 15/02/2003 - 04/05/2003, cat. no. 74
- 2006, Köln, Museum Ludwig, *Salvador Dalí: La gare de Perpignan - Pop, Op, Yes-yes, Pompier*, 18/03/2006 - 25/06/2006, cat. no. 29
- 2007, Figueres, Teatre-Museu Dalí, *Préstec temporal a la Fundació Gala-Salvador Dalí*, 29/01/2007 - 24/05/2007
- 2011, Riehen/Basel, Fondation Beyeler, *Surrealism in Paris*, 02/10/2011 - 29/01/2012, p. 179

Bibliography



- *Tableaux modernes*, Palais Galliera, Paris, 1969, n. p.
- *Dalí: Gemälde, Zeichnungen, Objekte, Schmuck*, Staatliche Kunsthalle, Baden-Baden, 1971, p. 121
- *Salvador Dalí: rétrospective, 1920-1980*, Centre Georges Pompidou, Musée National d'Art moderne, Paris, 1979, p. 167
- *Salvador Dalí*, The Tate Gallery, London, 1980, il. 66
- Josep Pla, *Salvador Dalí (il.)*, *Obres de museu*, DASA, Figueres, 1981, p. 31
- *20th century masters: the Thyssen-Bornemisza collection*, United Technologies Corporation, [S.I.], 1982, p. 50
- Ignacio Gómez de Liaño, *Dalí*, Polígrafa, Barcelona, 1983, il. 43
- *Dalí*, Sarpe, Madrid, 1984, il. 11, p. 86
- *Mestres moderns de la col·lecció Thyssen-Bornemisza*, Col·lecció Thyssen-Bornemisza, Electa, Lugano, Milà, 1986, p. 114
- *Cinq siècles d'art espagnol | Le Siècle de Picasso*, Ministerio de Cultura, Paris-Musées, [Madrid], Paris, 1987, p. 119
- *El Siglo de Picasso*, Ministerio de Cultura, Paris-Musées, [Madrid], Paris, 1988, p. 113
- *Salvador Dalí, 1904-1989*, Gerd Hatje, Stuttgart, 1989, p. 99
- *Salvador Dalí, fusioni veronesi*, Arsenale, [Verona], 1989, p. 24 (detail)
- *Salvador Dalí*, Musée des Beaux-Arts, Montréal, 1990, p. 53
- Robert Descharnes, Gilles Néret, *Salvador Dalí, 1904 -1989*, Benedikt Taschen, Köln, 1994, p. 172
- *Salvador Dalí*, Polígrafa, Barcelona, 1994, il. 29
- *Dalí*, Cercle d'Art, Paris, 1994, il. 29
- Marco Di Capua, *Dalí*, Librairie Gründ, Paris, 1994, p. 114
- *Dalí, Miró, Picasso e il surrealismo spagnolo*, Skira, Milano, 1995, p. 91
- Christopher Green, *The European avant-gardes : art in France and Western Europe 1904-c.1945*, Zwemmer, London, 1995, p. 103
- *Dalí. Arquitectura*, Fundació Gala-Salvador Dalí, Fundació Caixa de Catalunya, [Figueres], [Barcelona], 1996, p. 39
- Christopher Masters, *Dalí*, Phaidon, London, 1996, p. 65
- *Années 30 en Europe : le temps menaçant, 1929-1930*, Paris Musées, Flammarion, Paris, 1997, p. 114
- *Madrid - Barcelona 1930-1936. La tradició d'allò que és nou*, Fundació "La Caixa", Barcelona, 1997, p. 177
- *Galerie Daniel Malingue 35th anniversary : a review*, Galerie Daniel Malingue, Paris, 1997, p. 128
- Dawn Ades, Fiona Bradley, *Salvador Dalí: a mythology*, Tate Gallery Publishing, London, 1998, p. 63
- Christopher Green, *Art in France : 1900- 1940*, Yale University Press, New Haven and London, 2000, p. 277
- *Surrealism desire unbound*, Tate Publishing, London, 2001, p. 64
- *Grandes maestros de la pintura : Dalí*, Altaya, Barcelona, 2001, p. 12
- *Dalí : Gradiva*, Museo Thyssen-Bornemisza, Fundación Caja Madrid, Madrid, Madrid, 2002, cover, p. 71
- Juan Antonio Ramírez, *Dalí: lo crudo y lo podrido*, A. Machado Libros, Madrid, 2002, p. 78 (detail)
- *1992/2002 Museo Thyssen-Bornemisza*, Museo Thyssen-Bornemisza, Madrid, 2002, p. 46 (detail)
- *Les Essentiels de l'art Dalí*, Ludion, Amsterdam, 2003, p. 100
- *Modernismo e avanguardia : Picasso, Miró, Dalí e la pittura catalana*, Skira, Milano, 2003, p. 225
- *The Portable Dalí*, Universe, New York, 2003, p. 100
- *Persistence and memory : new critical perspectives on Dalí centennial*, Bompiani, [Milà], 2004, p. 109 (detail)
- *Dalí : afinitats electives*, Generalitat de Catalunya. Departament de Cultura, Barcelona, 2004, p. 284
- Marta Luna, Toni Matas, *Dalí i els altres secrets*, Distribucions d'Art Surrealista, Figueres, 2006, p. 5 (detail), p. 14
- *Salvador Dalí : La gare de Perpignan - Pop, Op, Yes-yes, Pompier*, Hatje Cantz, Ostfildern, 2006, p. 116
- *Dalís medienspiele: falsche fährten und paranoische selbstinszenierungen in den künsten*, Transcript, Bielefeld, 2007, p. 188
- Montse Aguer i Teixidor, *Los tesoros de Salvador Dalí*, Librería Universitaria, Barcelona, 2009, p. 31
- *La Sombra*, Museo Thyssen-Bornemisza, Fundación Caja Madrid, Madrid, Madrid, 2009, p. 190
- *Surrealism in Paris*, Hatje Kantz, Basilea, 2011, p. 179
- *Dalí un artista un genio*, Skira, Milano, 2012, p. 102, p. 105 (detail)
- José Jiménez, Dawn Ades, Georges Sebbag, *El Surrealismo y el sueño*, Museo Thyssen-Bornemisza, Madrid, 2013, p. 238
- "SALVADOR DALÍ", *ARTE Y PARTE*, 01/04/2013, s. l., p. 12



- Begoña Souviron López, *Dalí en el contexto cultural centroeuropeo : literatura e iconografía*, Universidad de Málaga, Málaga, 2014, p. 125 (detail)
- *Dalí Pitxot : Une amitié au cœur du surréalisme*, Marot S.A., Musée de Beaux -Arts, [S.I.], Tournai, 2017, p. 110

Reproduction Rights

The copyright on Salvador Dalí's works, included those that are reproduced in this Web page, is held by the Spanish State and has been granted in exclusivity to the Fundació Gala-Salvador Dalí.

Pursuant to intellectual property laws in force, the total or partial reproduction, distribution, transformation, public communication, interactively making available to the public, as well as any other exploitation, by any means, of the works included in this Web page is prohibited.

Any exploitation of Salvador Dalí's works is subject to the prior application and clearance of the relevant licence issued by VEGAP (tel. 91 532 66 32 and 93 201 03 31 ; www.vegap.es). Copyright infringement will be prosecuted according to Laws.