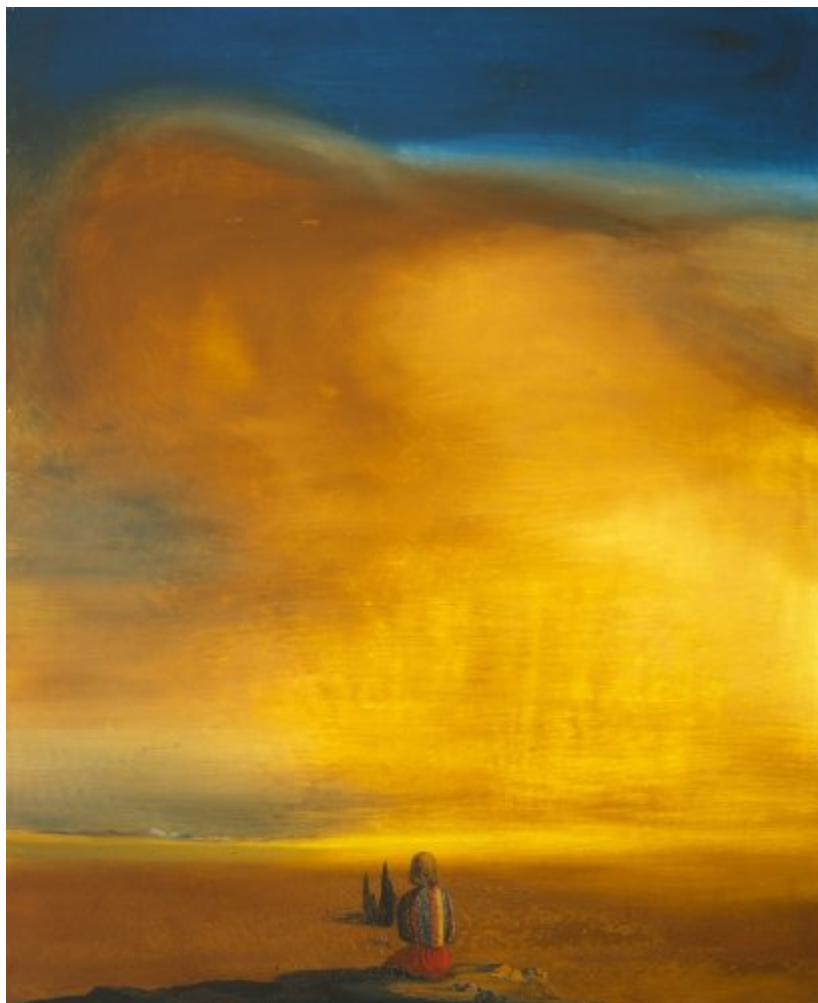




FUNDACIÓ
GALA-SALVADOR DALÍ



© Salvador Dalí, Fundació Gala-Salvador Dalí, Figueres, 2007 Photo © Hans Kaczmarek Nov. 86 USA: © Salvador Dalí Museum Inc., St. Petersburg, FL, 2007

Cat. no. P 322

***Le sphinx de sucre* (The Sugar Sphinx)**

Date: 1933
Technique: Oil on canvas
Dimensions: 72.7 x 59.69 cm
Signature: Signed and dated lower right corner: *Gala Salvador Dali 1933*



Location: The Dali Museum, St. Petersburg (Florida)



Provenance

- Viscount of Noailles
- Julien Levy Gallery, New York
- Mrs. J. J. O'Donohue
- E. and A. Reynolds Morse, Cleveland (Ohio)

Exhibitions

- 1934, Paris, Jacques Bonjean, *Exposition Dali*, 20/06/1934 - 13/07/1934, cat. no. 29
- 1934, New York, Julien Levy Gallery, *Dali*, 21/11/1934 - 10/12/1934, cat. no. 10
- 1965, New York, Gallery of Modern Art, *Salvador Dalí, 1910-1965*, 18/12/1965 - 13/03/1966, cat. no. 53
- 1998, Liverpool, Tate Gallery Liverpool, *Salvador Dalí: a mythology*, 21/10/1998 - 31/01/1999, cat. no. 25
- 1999, Fukuoka, Fukuoka Asian Art Museum, *Dali exhibition 1999*, 28/08/1999 - 24/10/1999, cat. no. 24
- 2006, Köln, Museum Ludwig, *Salvador Dalí: La gare de Perpignan - Pop, Op, Yes-yes, Pompier*, 18/03/2006 - 25/06/2006, cat. no. 39
- 2008, K. E. Silver, Bruce Museum, *Paris portraits. Artists, Friends, and Lovers*, 27/09/2008 - 04/01/2009, p. 87

Bibliography

- *Salvador Dalí*, The IMS Press, Cleveland [Ohio], 1954, p. 41
- A. Reynolds Morse, Michel Tapié, *Dalí: a study of his life and work*, New York graphic Society, Greenwich [Connecticut], 1958, p. 37
- *Salvador Dalí, 1910-1965*, The Foundation for Modern Art, New York, 1965, p. 61
- Max Gérard, *Dalí de Draeger*, Blume, Barcelona, 1968, il. 31
- *Ninety-three oils by Salvador Dalí: 1917-1970*, The Salvador Dali Museum, Cleveland, 1973, p. 155
- *Salvador Dalí ... a panorama of his art*, The Salvador Dali Museum, Cleveland, 1974, p. 65, p. 155
- Jacques Dopagne, *Dalí*, Fernand Hazan, Paris, 1974, il. 29 (detail)
- Salvador Dalí, René Passeron, *Salvador Dalí*, Filipacchi, Paris, 1978, p. 94
- *Salvador Dalí, selected works*, Filipacchi, New York, 1979, p. 94
- *Hommage à Dalí*, Vilo, Paris, 1980, p. 73
- Sarane Alexandrian, *Dalí*, Fernand Hazan, Paris, 1985, il. 29 (detail)
- Jacques Dopagne, *Dalí*, Fernand Hazan, Paris, 1985, il. 29
- Salvador Dalí, *The Tragic myth of Millet's Angelus*, The Salvador Dali Museum, St Petersburg, 1986, p. 66 (detail), p. 76
- *Dalí: the Salvador Dalí museum collection*, Bulfinch, Boston. Toronto. London, 1991, il. 48
- Carlos Rojas, *Salvador Dalí, or the art of spitting on your mother's portrait*, The Pennsylvania State University Press, University Park [Pennsylvania], 1993, il. 9
- Robert Descharnes, Gilles Néret, *Salvador Dalí, 1904 -1989*, Benedikt Taschen, Köln, 1994, p. 198 (detail)
- Whitney Chadwick, *Mith in surrealist painting 1929-1939: Dalí, Ernst, Masson*, UMI Dissertation Service, [Michigan], 1994, p. 250
- Marco Di Capua, *Dalí*, Librairie Gründ, Paris, 1994, p. 144 (detail)
- Kenneth Wach, *Salvador Dalí: masterpieces from the collection of the Salvador Dalí Museum*, Harry N. Abrams, Salvador Dalí Museum, New York, St. Petersburg, Florida, 1996, p. 69
- Dawn Ades, Fiona Bradley, *Salvador Dalí: a mythology*, Tate Gallery Publishing, London, 1998, p. 67
- *Dali exhibition 1999*, NTV Europe B.V., [S.l.], 1999, p. 89
- Robert S. Lubar, *The Salvador Dalí Museum collection*, Bulfinch, Boston - New York - London, 2000, p. 81
- William Jeffett, Joan Fontcuberta, *Imaginary gardens: mapping Dalí's landscapes*, Salvador Dalí Museum exhibition series, St. Petersburg, Florida, 2003, p. 32
- *Salvador Dalí: La gare de Perpignan - Pop, Op, Yes-yes, Pompier*, Hatje Cantz, Ostfildern, 2006, p. 89
- *Salvador Dalí*, Instituto Tomie Ohtake, Sao Paulo, 2014, p. 64



Reproduction Rights

The copyright on Salvador Dalí's works, included those that are reproduced in this Web page, is held by the Spanish State and has been granted in exclusivity to the Fundació Gala-Salvador Dalí.

Pursuant to intellectual property laws in force, the total or partial reproduction, distribution, transformation, public communication, interactively making available to the public, as well as any other exploitation, by any means, of the works included in this Web page is prohibited.

Any exploitation of Salvador Dalí's works is subject to the prior application and clearance of the relevant licence issued by VEGAP (tel. 91 532 66 32 and 93 201 03 31 ; www.vegap.es). Copyright infringement will be prosecuted according to Laws.