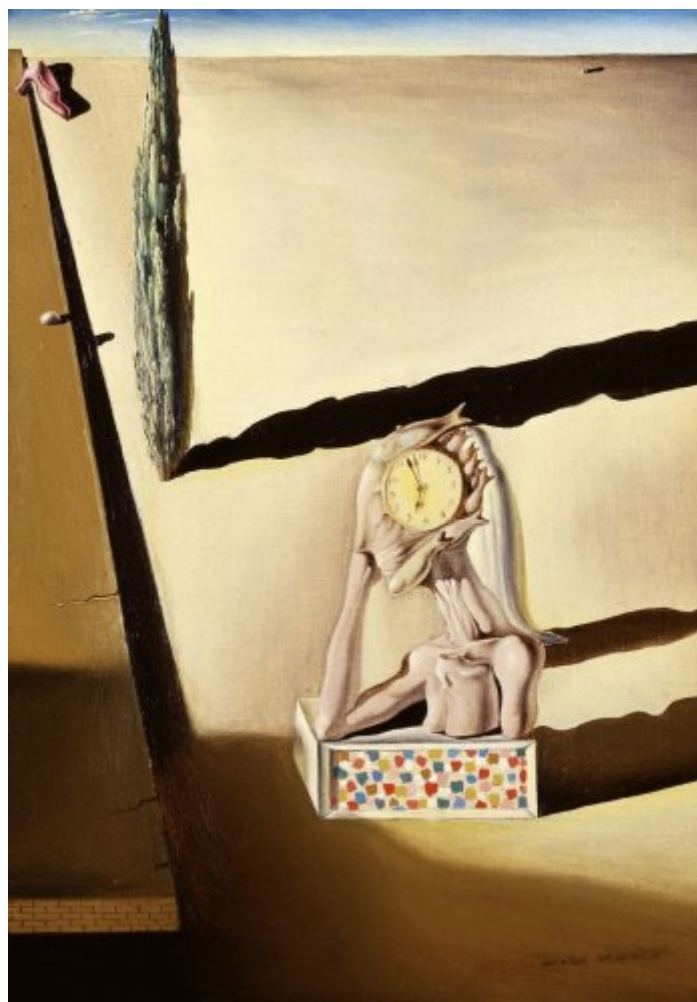




FUNDACIÓ  
GALA-SALVADOR DALÍ



© Salvador Dalí, Fundació Gala-Salvador Dalí, Figueres, 2007

**Cat. no. P 383**

## ***Homme poisson (Fish Man)***

### **The Fish Woman**

**Date:** 1930

**Technique:** Oil on canvas

**Dimensions:** 26.15 x 18.5 cm



**Signature:** Signed and dated lower right corner: *pour lolivette Salvador Dali 1930*

**Location:** Meadows Museum, Southern Methodist University, Dallas, Texas



## Provenance

- Galerie Pierre Colle, Paris
- Sir Michael Sadler, United Kingdom
- Private collection, Basel
- Auctioned at Phillips, Son & Neale, London, April 4th 1990
- Private collection, Paris
- Private collection, Basel
- Daniel Filipacchi, New York
- Private collection
- Auctioned at Sotheby's, New York, November 2nd, 2010
- Schlumberger collection
- Auctioned at Sotheby's, New York, November 4th, 2014

## Exhibitions

- 1931, Hartford, Connecticut, Wadsworth Atheneum, *Newer super-realism*, Novembre 1931, cat. no. 10
- 1934, London, Zwemmer Gallery, *Salvador Dalí. Catalogue of an Exhibition of Paintings, Drawings & Etchings*, 24/10/1934 - 10/11/1934, cat. no. 5
- 1936, Leicester, City of Leicester Museum & Art Gallery, *Contemporary Art*, 01/05/1936 - 20/06/1936, cat. no. 136
- 1999, New York, Solomon R. Guggenheim Museum, *Surrealism: two private eyes, the Nesuhi Ertegun and Daniel Filipacchi collections*, 04/06/1999 - 12/09/1999, cat. no. 39
- 2018, Dallas, Meadows Museum, SMU, *Dalí: Poetics of the Small, 1929-1936*, 09/09/2018 - 09/12/2018, cat. no. 2

## Bibliography

- "There's Method in the Madness of French Super-Realists Whose Odd Works Are Now on View Here", *The Hartford Courant*, 22/11/1931, Hartford, n. p.
- *Impressionist and modern paintings, drawings, watercolours and sculpture*, Phillips, London, 1990, p. 53
- *Surrealism: two private eyes, the Nesuhi Ertegun and Daniel Filipacchi collections*, Guggenheim Museum Publications, New York, 1999, p. 93
- *Dalí's optical illusions*, Wadsworth Atheneum Museum of Art, Hartford, Connecticut, 2000, p. 42 (indirect image)
- *Masterpieces of surrealism*, Salvador Dalí Museum, St. Petersburg, Florida, 2000, p. 52 (indirect image)
- *Dalí : poetics of the small, 1929-1936*, Meadows Museum, Dallas, 2018, cover (detail), p. 97, p. 148



## **Reproduction Rights**

The copyright on Salvador Dalí's works, included those that are reproduced in this Web page, is held by the Spanish State and has been granted in exclusivity to the Fundació Gala-Salvador Dalí.

Pursuant to intellectual property laws in force, the total or partial reproduction, distribution, transformation, public communication, interactively making available to the public, as well as any other exploitation, by any means, of the works included in this Web page is prohibited.

Any exploitation of Salvador Dalí's works is subject to the prior application and clearance of the relevant licence issued by VEGAP (tel. 91 532 66 32 and 93 201 03 31 ; [www.vegap.es](http://www.vegap.es)). Copyright infringement will be prosecuted according to Laws.