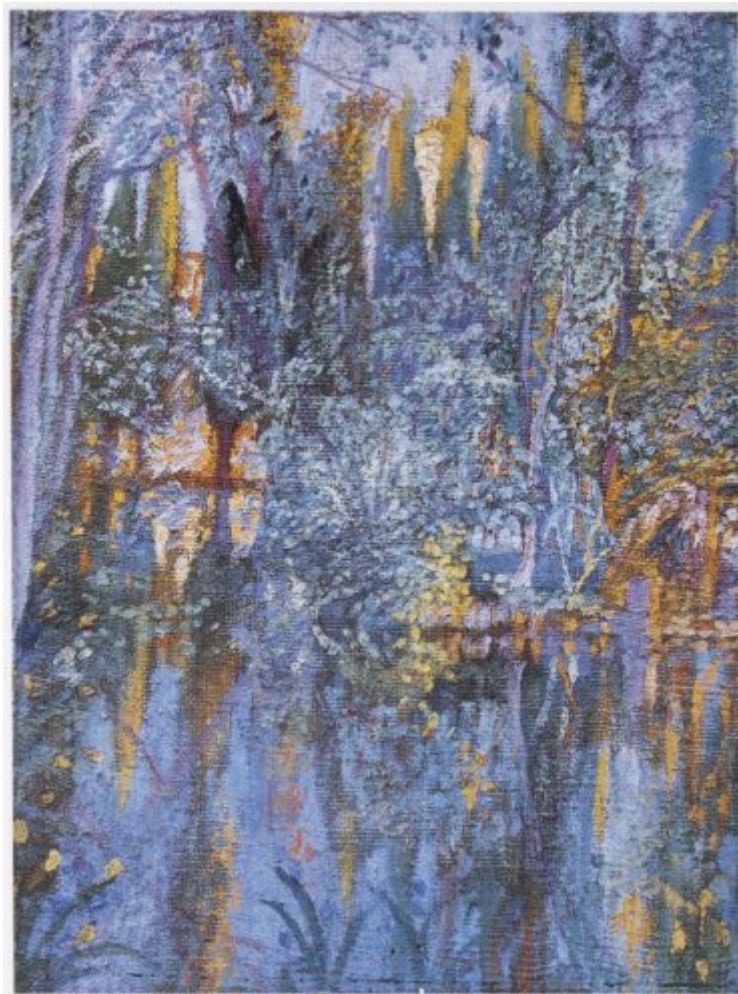




FUNDACIÓ
GALA-SALVADOR DALÍ



© Salvador Dalí, Fundació Gala-Salvador Dalí, Figueres, 2007

Cat. no. P 42

The Lake at Vilabertran

Date:	c. 1919
Technique:	Oil on canvas
Dimensions:	68.5 x 47.5 cm
Signature:	Signed lower right at a later date: <i>Dalí</i>
Location:	Private collection, Madrid



Provenance

- Josep Soler Grau, Figueres
- Herminia Camps, Figueres
- Garriga Camps collection, Figueres
- Private collection, Madrid
- Auctioned at Fernando Durán Subastas, Madrid, November 10th, 2015
- Private collection, Madrid
- Auctioned at Fernando Durán Subastas, Madrid, March 6th, 2016

Bibliography

- Tadao Ogura, Robert Descharnes, *L'Art moderne du monde*, Shueisha, Tokyo, 1974, il. 2, p. 94
- Takahiko Okada, *Dalí*, Shueisha, [S.I.], 1986, p. 7
- Salvador Dalí, *Un diari, 1919-1920: les meves impressions i records íntims*, Fundació Gala-Salvador Dalí, Edicions 62, [Figueres], Barcelona, 1994, n. p. (reversed image)
- Robert Descharnes, Gilles Néret, *Salvador Dalí, 1904 -1989*, Benedikt Taschen, Köln, 1994, p. 37
- Marco Di Capua, *Dalí*, Librairie Gründ, Paris, 1994, p. 41
- Marco Di Capua, *Salvador Dalí : la vita e l'opera*, Mondadori Electa, Milano, 2002, p. 41
- Marco Di Capua, *Salvador Dalí : su vida, su obra*, Carroggio, Barcelona, 2003, p. 41
- *El País de Dalí*, Consorci del Museu de l'Empordà, Figueres, 2004, p. 165
- Rafael Santos Torroella, *El Primer Dalí, 1918-1929 : catàlogo razonado*, IVAM Institut Valencià d'Art Modern, Generalitat Valenciana. Conselleria de Cultura, Educació i Esport, Publicaciones, [València], [València], [Madrid], 2005, p. 63
- *Salvador Dalí : La gare de Perpignan - Pop, Op, Yes-yes, Pompier*, Hatje Cantz, Ostfildern, 2006, p. 141

Reproduction Rights

The copyright on Salvador Dalí's works, included those that are reproduced in this Web page, is held by the Spanish State and has been granted in exclusivity to the Fundació Gala-Salvador Dalí.

Pursuant to intellectual property laws in force, the total or partial reproduction, distribution, transformation, public communication, interactively making available to the public, as well as any other exploitation, by any means, of the works included in this Web page is prohibited.

Any exploitation of Salvador Dalí's works is subject to the prior application and clearance of the relevant licence issued by VEGAP (tel. 91 532 66 32 and 93 201 03 31 ; www.vegap.es). Copyright infringement will be prosecuted according to Laws.