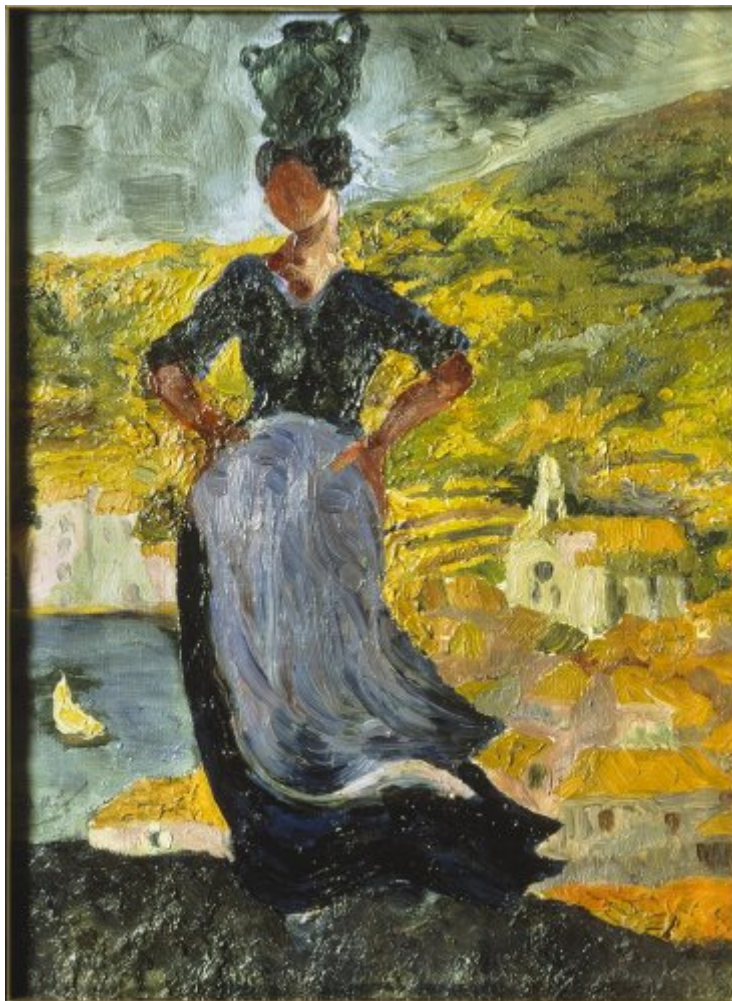




FUNDACIÓ  
GALA-SALVADOR DALÍ



© Salvador Dalí, Fundació Gala-Salvador Dalí, Figueres, 2004

## Cat. no. P 49

### The Woman with the Pitcher

<b>Date:</b>	c. 1918
<b>Technique:</b>	Oil on canvas
<b>Dimensions:</b>	34.6 x 26 cm Measurements framed
<b>Signature:</b>	Signed lower left at a later date: <i>Dalí</i>
<b>Location:</b>	Private collection



## Provenance

- Rafel Dalí, Barcelona
- Montserrat Dalí de Bas, Barcelona

## Exhibitions

- 1964, Tokyo, Tokyo Prince Hotel Gallery, *Salvador Dalí : exhibition - Japan 1964*, 08/09/1964 - 18/10/1964, cat. no. 4
- 1965, New York, Gallery of Modern Art, *Salvador Dalí, 1910-1965*, 18/12/1965 - 13/03/1966, cat. no. 4
- 1983, Madrid, Museo Español de Arte Contemporáneo, *400 obras de Salvador Dalí del 1914 al 1983*, 15/04/1983 - 29/05/1983, cat. no. 60
- 2004, Cadaqués, Societat l'Amistat, *Atmosfera Dalí*, 02/07/2004 - 03/10/2004, cat. no. 13

## Bibliography

- A. Oriol Anguera, *Mentira y verdad de Salvador Dalí*, Cobalto, Barcelona, 1948, p. 1
- *Salvador Dalí : exhibition - Japan 1964*, Mainichi Newspaper, Tokyo, 1964, p. 31
- Cesáreo Rodríguez-Aguilera, *Salvador Dalí*, Nauta, Barcelona, 1980, il. 14
- Robert Descharnes, Gilles Néret, *Salvador Dalí, 1904 -1989*, Benedikt Taschen, Köln, 1994, p. 30
- Marco Di Capua, *Dalí*, Librairie Gründ, Paris, 1994, p. 39
- *Salvador Dalí*, Parkstone, England, 1999, p. 13
- *The Portable Dalí*, Universe, New York, 2003, p. 15
- *Les Essentiels de l'art Dalí*, Ludion, Amsterdam, 2003, p. 15
- *Atmosfera Dalí*, Ajuntament de Cadaqués, Societat l'Amistat, Cadaqués, 2004, p. 21
- *Naturaleza & arte. Gaudí, Miró, Dalí*, Sociedad Estatal para Exposiciones Internacionales, [Madrid], 2005, p. 160
- Rafael Santos Torroella, *El Primer Dalí, 1918-1929 : catálogo razonado*, IVAM Institut Valencià d'Art Modern, Generalitat Valenciana. Conselleria de Cultura, Educació i Esport, Publicacions, [València], [València], [Madrid], 2005, p. 49, p. 90
- *Cadaqués de Picasso : centenari de l'estada de Pablo Picasso a Cadaqués, 1910-2010*, Ajuntament de Cadaqués, Museu de Cadaqués, Cadaqués, Cadaqués, 2010, p. 236
- *Del primer Dalí al Manifest Groc : 1914-1928*, Ajuntament de Cadaqués, Museu de Cadaqués, Cadaqués, 2011, cover (detail), p. 93

## Reproduction Rights

The copyright on Salvador Dalí's works, included those that are reproduced in this Web page, is held by the Spanish State and has been granted in exclusivity to the Fundació Gala-Salvador Dalí.

Pursuant to intellectual property laws in force, the total or partial reproduction, distribution, transformation, public communication, interactively making available to the public, as well as any other exploitation, by any means, of the works included in this Web page is prohibited.

Any exploitation of Salvador Dalí's works is subject to the prior application and clearance of the relevant licence issued by VEGAP (tel. 91 532 66 32 and 93 201 03 31 ; [www.vegap.es](http://www.vegap.es)). Copyright infringement will be prosecuted according to Laws.