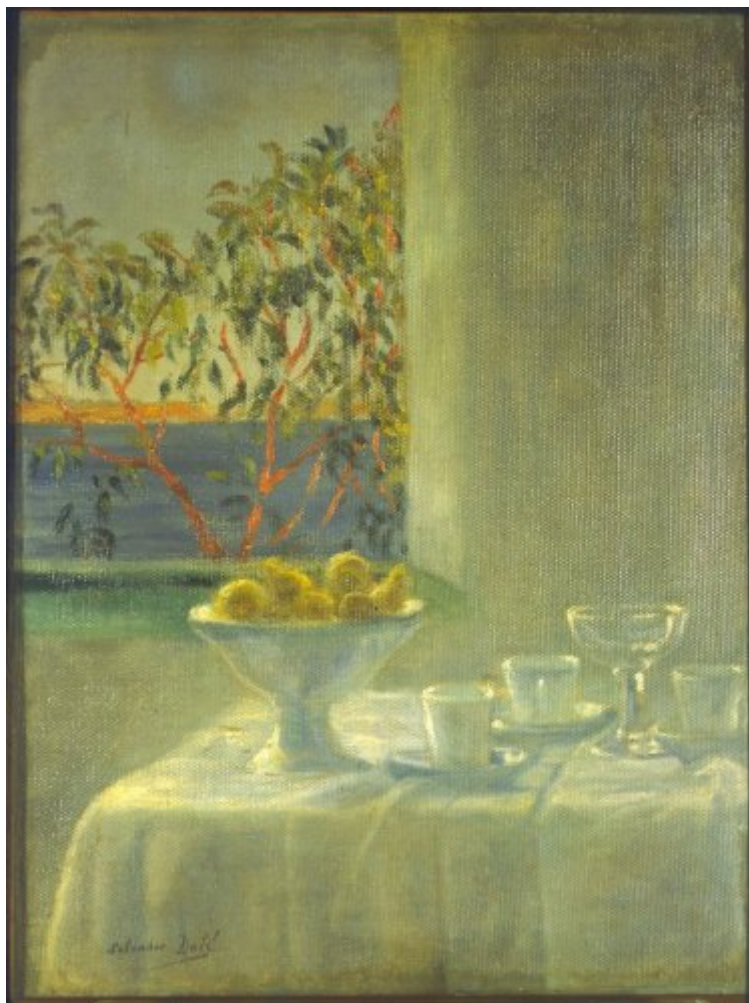




FUNDACIÓ  
GALA-SALVADOR DALÍ



© Salvador Dalí, Fundació Gala-Salvador Dalí, Figueres, 2004

## Cat. no. P 64

### Still Life by a Window

<b>Date:</b>	c. 1920
<b>Technique:</b>	Oil on canvas
<b>Dimensions:</b>	61 x 46 cm
<b>Signature:</b>	Signed lower left: <i>Salvador Dalí</i>
<b>Location:</b>	Ramon Golobart collection, Barcelona



## Provenance

- Peter Moore, Cadaques

## Exhibitions

- 1977, Montrouge, Salon de Montrouge, *Dalí : peintures, sculptures, dessins*, 04/05/1977 - 05/06/1977, cat. no. 3
- 1981, Heidelberg, Schloss Heidelberg, *Dalí: Gemälde, Zeichnungen, Objekte, Skulpturen*, 02/10/1981 - 04/11/1981, no reference
- 1982, Perpignan, Palais des Rois de Majorque, *Salvador Dalí, 1904 : huiles, dessins, sculptures*, August - September 1982, cat. no. 2
- 1983, Toulouse, Réfectoire des Jacobins, *Dali à Toulouse*, November 1983 - January 1984, no reference
- 1989, Stuttgart, Staatsgalerie, *Salvador Dalí, 1904-1989*, 13/05/1989 - 23/07/1989, cat. no. 12
- 1994, Madrid, Museo Nacional Centro de Arte Reina Sofía, *Dalí joven, 1918-1930*, 18/10/1994 - 16/01/1995, cat. no. 11
- 1994, Barcelona, Pia Almoína, *L'Empordà, terra d'artistes*, 16/06/1994 - 24/07/1994, cat. no. 30
- 2001, Segovia, Museo de Arte Contemporáneo Esteban Vicente, *Dalí en las colecciones españolas*, 09/10/2001 - 06/01/2002, cat. no. 3
- 2004, Cadaqués, Societat l'Amistat, *Atmosfera Dalí*, 02/07/2004 - 03/10/2004, il. 12
- 2006, Zaragoza, Centro de Exposiciones y Congresos de Zaragoza, *Dalí*, 23/02/2006 - 16/04/2006, p. 40
- 2006, Cadaqués, Museu de Cadaqués, *Dalí evolució*, 08/07/2006 - 05/11/2006, cat. no. 17

## Bibliography

- *Dalí : peintures, sculptures, dessins*, [Salon de Montrouge], [Montrouge], 1977, n. p.
- *Salvador Dalí : Gemälde, Zeichnungen, Objekte, Skulpturen*, Rudolf A. Hünigerle, Heidelberg, 1981, p. 31
- *Dali à Perpignan*, Gerhard Habarta, Vienne, 1982, il. 2
- *Dali à Toulouse*, Gerhard Habarta, Vienne, 1983, n. p.
- *Los Dalís de Dalí: colección del museo nacional centro de arte reina Sofía*, Centro cultural, Arte contemporaneo, México D. F., 1990, p. 13
- Rafael Santos Torroella, *Dalí residente*, Residencia de Estudiantes - CSIC, [Madrid], 1992, p. 25
- *Dalí joven, 1918-1930*, Museo Nacional Centro de Arte Reina Sofía, [Madrid], 1994, p. 73
- *L'Empordà, terra d'artistes*, Generalitat de Catalunya. Departament de Cultura, Barcelona, 1994, p. 47
- Robert Descharnes, Gilles Néret, *Salvador Dalí, 1904 -1989*, Benedikt Taschen, Köln, 1994, p. 36
- *Dalí en las colecciones españolas*, Museo de arte contemporáneo Esteban Vicente, Segovia, 2001, p. 57
- *Comer o no comer o las relaciones del arte con la comida en el siglo XX*, Consorcio Salamanca, Salamanca, 2002, p. 23
- *Atmosfera Dalí*, Ajuntament de Cadaqués, Societat l'Amistat, Cadaqués, 2004, p. 20
- Silvia Borghesi, *Dalí*, Electa, Milán, 2004, p. 26
- Rafael Santos Torroella, *El Primer Dalí, 1918-1929 : catálogo razonado*, IVAM Institut Valencià d'Art Modern, Generalitat Valenciana. Conselleria de Cultura, Educació i Esport, Publicaciones, [València], [València], [Madrid], 2005, p. 66
- *Dalí*, Ibercaja, Zaragoza, 2006, p. 40
- *Dalí evolució*, Ajuntament de Cadaqués, Museu de Cadaqués, Cadaqués, 2006, p. 28
- *Del primer Dalí al Manifest Groc : 1914-1928*, Ajuntament de Cadaqués, Museu de Cadaqués, Cadaqués, 2011, p. 117



## Reproduction Rights

The copyright on Salvador Dalí's works, included those that are reproduced in this Web page, is held by the Spanish State and has been granted in exclusivity to the Fundació Gala-Salvador Dalí.

Pursuant to intellectual property laws in force, the total or partial reproduction, distribution, transformation, public communication, interactively making available to the public, as well as any other exploitation, by any means, of the works included in this Web page is prohibited.

Any exploitation of Salvador Dalí's works is subject to the prior application and clearance of the relevant licence issued by VEGAP (tel. 91 532 66 32 and 93 201 03 31 ; [www.vegap.es](http://www.vegap.es)). Copyright infringement will be prosecuted according to Laws.