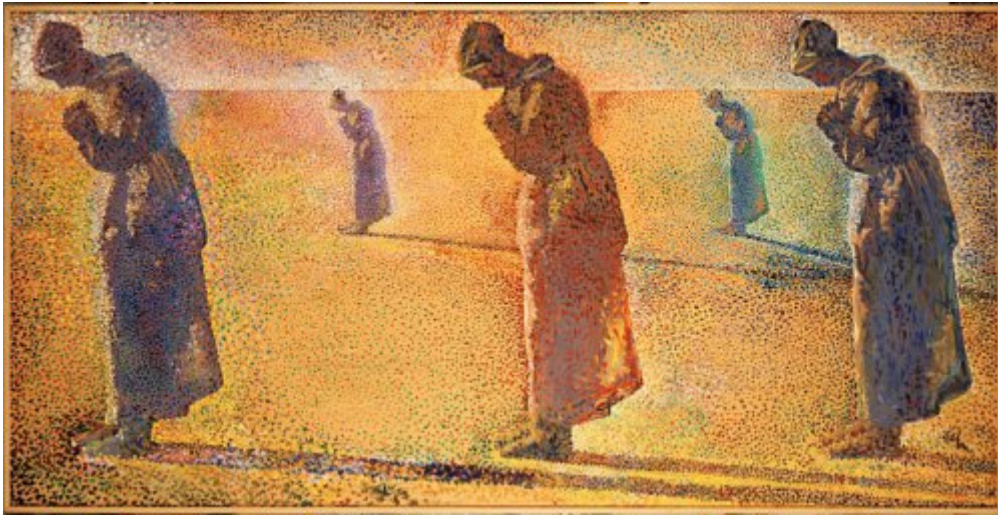




FUNDACIÓ
GALA-SALVADOR DALÍ



© Salvador Dalí, Fundació Gala-Salvador Dalí, Figueres, 2017

Cat. no. P 910

***Aurore, midi, couchant et crépuscule* (Dawn, Noon, Afternoon and Twilight)**

Date: 1979

Technique: Oil on plywood panel

Dimensions: 122 x 244 cm

Signature: Signed and dated lower right: 1979 / Dalí

Location: Fundació Gala-Salvador Dalí, Figueres



Provenance

- Artist's collection

Observations

According to the catalogue of the retrospective "Salvador Dalí" at the Centre Pompidou in Paris, this work should be accompanied by an audio track based on a text by Raymond Roussel, adapted by the painter, who says: "Quelle heure est-il? C'est l'heure de l'Angélus. Alors, garçon, apportez-moi un arlequin!" (What time is it? It is the hour of the Angelus. So, boy, bring me a harlequin!) ("Salvador Dalí: Retrospective, 1920-1980". Paris, Centre Georges Pompidou, Musée National d'Art Moderne, 1979, p. 329).

Exhibitions

- 1979, Paris, Centre Georges Pompidou, Musée National d'Art Moderne, *Salvador Dalí: rétrospective, 1920-1980*, 18/12/1979 - 21/04/1980, núm cat. 274
- 1983, Madrid, Museo Español de Arte Contemporáneo, *400 obras de Salvador Dalí del 1914 al 1983*, 15/04/1983 - 29/05/1983, cat. no. 441
- 1984, Ferrara, Palazzo dei Diamanti, *I Dalí di Salvador Dalí*, 01/07/1984 - 30/09/1984, cat. no. 53
- 1990, Montréal, Musée des Beaux-Arts, *Salvador Dalí*, 27/04/1990 - 29/07/1990, cat. no. 129
- 1993, Sevilla, Fundación Fondo de Cultura de Sevilla, *Dalí en los fondos de la Fundación Gala-Salvador Dalí*, 27/04/1993 - 04/07/1993, no reference
- 1995, Salamanca, Sala de Exposiciones de "San Eloy", *El Siglo de Dalí*, 30/10/1995 - 31/12/1995, cat. no. 21
- 1996, Santiago de Chile, Museo Nacional de Bellas Artes, *El Genio de Salvador Dalí*, 04/11/1996 - 15/01/1997, cat. no. 19
- 2004, Venezia, Palazzo Grassi, *Dalí*, 12/09/2004 - 16/01/2005, cat. no. 244
- 2010, Milano, Palazzo Reale, *Salvador Dalí, il sogno si avvicina*, 22/09/2010 - 30/01/2011, no reference
- 2012, Paris, Centre Pompidou, *Dalí*, 21/11/2012 - 25/03/2013, p. 219

Bibliography

- *Salvador Dalí: rétrospective, 1920-1980*, Centre Georges Pompidou, Musée National d'Art moderne, Paris, 1979, p. 329
- *400 obras de Salvador Dalí de 1914 a 1983*, Obra Cultural de la Caixa de Pensions, [Madrid], 1983, p. 249
- *Dalí*, Sarpe, Madrid, 1984, il. 50, p. 93
- *I Dalí di Salvador Dalí*, Gianni Tassinari, Ferrara, 1984, p. 206
- Salvador Dalí, *The Tragic myth of Millet's Angelus*, The Salvador Dali Museum, St Petersburg, 1986, [p. 139]
- *Salvador Dalí*, Musée des Beaux-Arts, Montréal, 1990, p. 186
- *Dalí en los fondos de la Fundación Gala-Salvador Dalí*, Fundación Fondo de Cultura, Sevilla, 1993, p. 105
- José Luis Giménez-Frontín, *Teatre-Museu Dalí*, Tusquets / Electa, [Barcelona] / Madrid, 1994, p. 101
- Robert Descharnes, Gilles Néret, *Salvador Dalí, 1904 -1989*, Benedikt Taschen, Köln, 1994, p. 677
- Jessica Hodge, *Salvador Dali*, Barnes & Noble, New York, 1994, p. 126-127
- *El Siglo de Dalí*, Caja Salamanca y Soria | Fundació Gala-Salvador Dalí, Salamanca | [Figueres], 1995, p. 88-89
- *El Genio de Salvador Dalí*, Museo Nacional de Bellas Artes, Santiago de Chile, 1996, p. 51
- *Les Essentiels de l'art Dalí*, Ludion, Amsterdam, 2003, p. 386-387
- Ricard Mas Peinado, *Universdalí*, Lunwerg, Barcelona, Madrid, 2003, p. 166
- *The Portable Dalí*, Universe, New York, 2003, p. 386-387
- Lluís Llongueras, *Todo Dalí : vida y obra del personaje más genial y espectacular del siglo XX*, Generalitat de Catalunya, [Barcelona], 2003, p. XCII
- *Obra completa : Álbum*, Destino | Fundació Gala-Salvador Dalí | Sociedad Estatal de Conmemoraciones



- Culturales, Barcelona | [Figueres] | [Madrid], 2004, p. 342
- *Dalí*, Rizzoli, New York, 2005, p. 411
 - Antoni Pitxot, Montse Aguer i Teixidor, *Teatre-Museu Dalí de Figueres*, Fundació Gala-Salvador Dalí | Triangle Postals, [Figueres] | Sant Lluís, Menorca, 2005, p. 196
 - *Dalí's universe and masterpieces of surrealists*, The Museum of Art, Ehime (Japó), [2006], p. 11
 - *Salvador Dalí: an illustrated life*, Tate Publishing | Fundació Gala-Salvador Dalí | Sociedad Estatal de Conmemoraciones Culturales - Ministerio de Cultura, London | [Figueres] | [Madrid], 2007, p. 342
 - M^a Mercè Riera i Arnijas, *Dalí, Ciro*, [Barcelona], 2008, p. 133, p. 140
 - *Salvador Dalí: il sogno si avvicina*, 24 Ore Cultura, Milano, 2010, p. 81
 - *2011: Memoria = Memòria*, Fundació Gala-Salvador Dalí, Figueres, 2011, p. 120 (indirect image)
 - *Dalí*, Centre Pompidou, Paris, 2012, p. 219
 - *2012: Memoria = Memòria*, Fundació Gala-Salvador Dalí, Figueres, 2013, p. 124 (indirect image)
 - *Memoria 2013 = Memòria 2013*, Fundació Gala-Salvador Dalí, Figueres, 2014, p. 118 (indirect image)
 - Antoni Pitxot, Montse Aguer i Teixidor, *Teatre-Museu Dalí. Figueres*, Fundació Gala-Salvador Dalí | Triangle Postals, [Figueres] | Sant Lluís, Menorca, 2016, p. 172

Reproduction Rights

The copyright on Salvador Dalí's works, included those that are reproduced in this Web page, is held by the Spanish State and has been granted in exclusivity to the Fundació Gala-Salvador Dalí.

Pursuant to intellectual property laws in force, the total or partial reproduction, distribution, transformation, public communication, interactively making available to the public, as well as any other exploitation, by any means, of the works included in this Web page is prohibited.

Any exploitation of Salvador Dalí's works is subject to the prior application and clearance of the relevant licence issued by VEGAP (tel. 91 532 66 32 and 93 201 03 31 ; www.vegap.es). Copyright infringement will be prosecuted according to Laws.