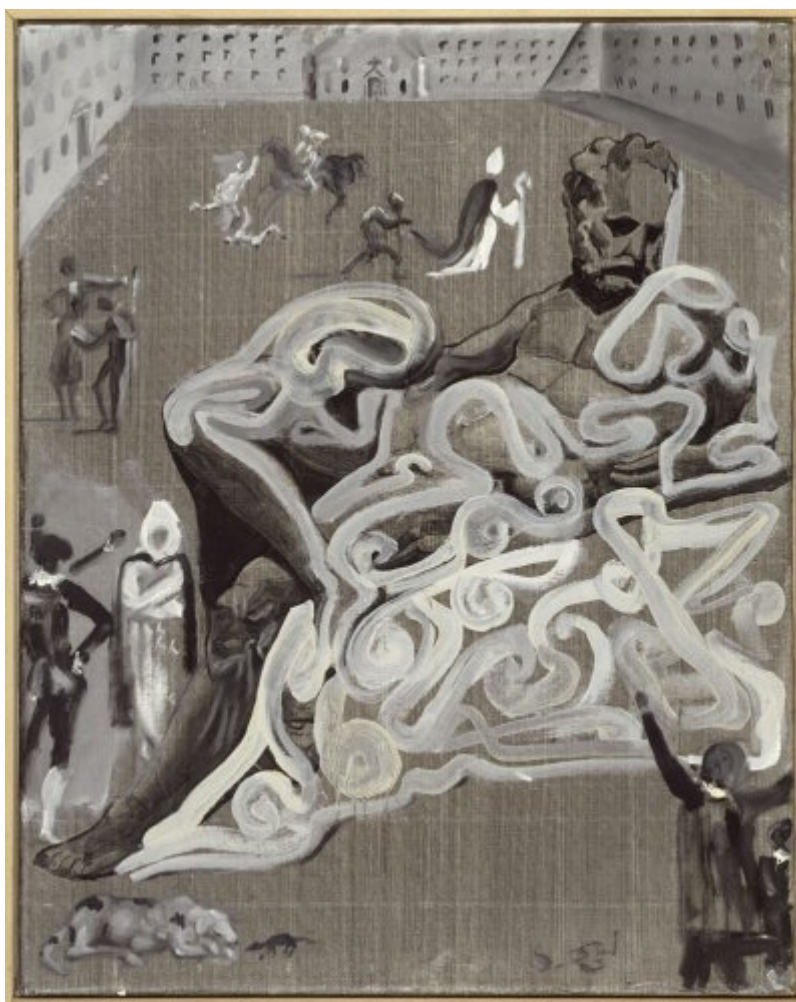




FUNDACIÓ
GALA-SALVADOR DALÍ



© Salvador Dalí, Fundació Gala-Salvador Dalí, Figueres, 2017

Cat. no. P 989

Untitled

"Twilight" after the Tomb of Lorenzo de' Medici by Michelangelo in the Courtyard of El Escorial and Catastrophe-Form Writing

Date: c. 1982
Technique: Oil on canvas
Dimensions: 75.5 x 60.5 cm



Signature: Signed lower right: *S. DA(L)GÍ*

Location: Fundació Gala-Salvador Dalí, Figueres. Dalí bequest



Provenance

- Artist's collection

Exhibitions

- 1984, Ferrara, Palazzo dei Diamanti, *I Dalí di Salvador Dalí*, 01/07/1984 - 30/09/1984, cat. no. 68
- 1984, [Aalborg], Husets Galleri, *Salvador Dalí, Pitxot, Evarist Vallès*, 25/05/1984 - 28/06/1984, cat. no. 7
- 2016, Pisa, Palazzo Blu, *Dalí. Il sogno del Classico*, 01/10/2016 - 05/05/2017, cat. no. 15
- 2017, St. Petersburg, Fabergé Museum, *Salvador Dalí*, 31/03/2017 - 02/07/2017

Bibliography

- *Salvador Dalí, Pitxot, Evarist Vallès*, Husets Galleri, [Aalborg], 1984, p. 16
- *I Dalí di Salvador Dalí*, Gianni Tassinari, Ferrara, 1984, p. 213
- Robert Descharnes, Gilles Néret, *Salvador Dalí, 1904 -1989*, Benedikt Taschen, Köln, 1994, p. 710
- *Dalí: Il sogno del Classico*, Skira, Milano, 2016, p. 93

Reproduction Rights

The copyright on Salvador Dalí's works, included those that are reproduced in this Web page, is held by the Spanish State and has been granted in exclusivity to the Fundació Gala-Salvador Dalí.

Pursuant to intellectual property laws in force, the total or partial reproduction, distribution, transformation, public communication, interactively making available to the public, as well as any other exploitation, by any means, of the works included in this Web page is prohibited.

Any exploitation of Salvador Dalí's works is subject to the prior application and clearance of the relevant licence issued by VEGAP (tel. 91 532 66 32 and 93 201 03 31 ; www.vegap.es). Copyright infringement will be prosecuted according to Laws.