



FUNDACIÓ  
GALA-SALVADOR DALÍ

**Cat. no. OE 9**

## ***L'enveloppe***

### **The Envelope**

Unique Original Work



© Salvador Dalí, Fundació Gala-Salvador Dalí, VEGAP, Figueres, 2019 Brassai © Estate Brassai-RMN-Grand Palais

<b>Author:</b>	Salvador Dalí i Domènech - Gyula Halász, alias Brassai
<b>Date:</b>	ca. 1933
<b>Technique:</b>	Photograph and found object or object of automatic origin Gelatin silver print
<b>Dimensions:</b>	23,4 x 17,7 cm The dimensions correspond to the original print run of the photograph
<b>Inscriptions:</b>	On the back: <i>L'enveloppe</i>
<b>Location:</b>	Centre Pompidou - Musée national d'art moderne - Centre de création industrielle, Paris



## Description

Between 1932-1933, Dalí took on the artistic direction of a series of photographs made with Gyula Halász, alias Brassai (1899-1984), in which certain objects, probably of automatic origin, acquire a new conceptual and artistic dimension, grounded in the essence of the photographic image. Several of these photographs were published anonymously in 1933 in the magazine *Minotaure*, under the heading 'Sculptures involontaires', each with a descriptive title drawing attention to details of the work. A number of these photographs that were not made public at the time constitute further examples of this type of creation, such as this photograph, conserved in the Centre de création industrielle at the Pompidou Centre in Paris. A letter from Dalí to Brassai, in or around 1933, includes a preliminary design for this work together with a mention of the word 'envelope' [*sic*].

## Observations

The dimensions and the inscriptions correspond to the original print run of this photograph, which is conserved at the Centre de création industrielle in Paris.

## Bibliography

- Didier Ottinger, *Dictionnaire de l'objet surréaliste*, Gallimard, Centre Pompidou, Paris, 2013, pp. [245], 246, [307], ill. (reversed image)
- Anna Dezeuze, Julia Kelly, *Found sculpture and photography from surrealism to contemporary art*, Ashgate, Farnham, UK, Burlington, VT, 2013, pp. 5-9, [13]-18, 30, 99-102

## Related works



© Salvador Dalí, Fundació Gala-Salvador Dalí, VEGAP, Figueres, 2019 Brassai © Estate Brassai-RMN-Grand Palais

Cat. no. OE 3

**«Symmetrically» rolled-up bus ticket, forming a rare mechanism of automatism with evident germs of stereotypes**

1932-1933



© Salvador Dalí, Fundació Gala-Salvador Dalí, VEGAP, Figueres, 2019 © Estate Brassai Succession

Cat. no. OE 4

**Ornamental Modern Style bread escapes the soft stereotype**

1932-1933



© Salvador Dalí, Fundació Gala-Salvador Dalí, VEGAP, Figueres, 2019 Brassai © Estate Brassai-RMN-Grand Palais

Cat. no. OE 5

**Piece of soap presenting Modern Style automatic shapes, found in a washbasin**

1932-1933

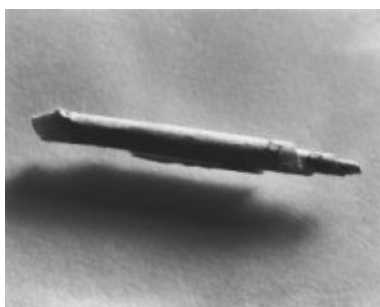


© Salvador Dalí, Fundació Gala-Salvador Dalí, VEGAP, Figueres, 2019 © Estate Brassai Succession - Philippe Ribeyrolles

Cat. no. OE 6

**The morphological accident of the squeezed toothpaste does not escape the fine ornamental stereotype**

1932-1933

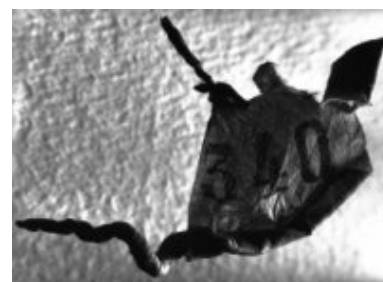


© Salvador Dalí, Fundació Gala-Salvador Dalí, VEGAP, Figueres, 2019 © Estate Brassai Succession - Philippe Ribeyrolles

Cat. no. OE 7

**Elementary rolling-up obtained from a «mental defective»**

1932-1933



© Salvador Dalí, Fundació Gala-Salvador Dalí, VEGAP, Figueres, 2019 © Estate Brassai Succession - Philippe Ribeyrolles

Cat. no. OE 8

**Rolled-up bus ticket, found in the pocket of an average bureaucrat (Crédit Lyonnais); the most frequent characteristics of «Modern Style»**

1932-1933



© Salvador Dalí, Fundació Gala-Salvador Dalí, VEGAP, Figueres, 2019 Brassai © Estate Brassai-RMN-Grand Palais

Cat. no. OE 10

**Untitled. Automatic object**

ca. 1933



© Salvador Dalí, Fundació Gala-Salvador Dalí, VEGAP, Figueres, 2019 Brassai © Estate Brassai-RMN-Grand Palais

Cat. no. OE 13

**Shell**

ca. 1933



© Salvador Dalí, Fundació Gala-Salvador Dalí, VEGAP, Figueres, 2019 Brassai © Estate Brassai-RMN-Grand Palais

Cat. no. OE 11

**Piece of cotton wool  
instantly rolled up and  
abandoned (category of  
«aborted automatism»)**

ca. 1933



© Salvador Dalí, Fundació Gala-Salvador Dalí, VEGAP, Figueres, 2019 Brassai © Estate Brassai-RMN-Grand Palais

Cat. no. OE 12

**Untitled. Automatic object**

ca. 1933

## Reproduction Rights

The copyright on Salvador Dalí's works, included those that are reproduced in this Web page, is held by the Spanish State and has been granted in exclusivity to the Fundació Gala-Salvador Dalí.

Pursuant to intellectual property laws in force, the total or partial reproduction, distribution, transformation, public communication, interactively making available to the public, as well as any other exploitation, by any means, of the works included in this Web page is prohibited.

Any exploitation of Salvador Dalí's works is subject to the prior application and clearance of the relevant licence issued by VEGAP (tel. 91 532 66 32 and 93 201 03 31 ; [www.vegap.es](http://www.vegap.es)). Copyright infringement will be prosecuted according to Laws.