



FUNDACIÓ
GALA-SALVADOR DALÍ

Cat. no. OE 8

Numéro d'autobus roulé, trouvé dans la poche de veston d'un bureaucrate moyen (Crédit Lyonnais) ; caractéristiques les plus fréquentes de « Modern Style »

Rolled-up bus ticket, found in the pocket of an average bureaucrat (Crédit Lyonnais); the most frequent characteristics of «Modern Style»

Unique Original Work



© Salvador Dalí, Fundació Gala-Salvador Dalí, VEGAP, Figueres, 2019 © Estate Brassai Succession - Philippe Ribeyrolles

Author:	Salvador Dalí i Domènech - Gyula Halász, alias Brassai
Date:	1932-1933
Technique:	Photograph and found object or object of automatic origin
Dimensions:	For this study we have taken into consideration the homothetic posthumous print run in the original format of 17 x 23 cm
Location:	Unknown. Homothetic posthumous print: Estate Brassai Succession



Description

Between 1932-1933, Dalí took on the artistic direction of a series of photographs made with Gyula Halász, alias Brassai (1899-1984), in which certain objects, probably of automatic origin, acquire a new conceptual and artistic dimension, grounded in the essence of the photographic image. Several of these photographs were published anonymously in 1933 in the magazine *Minotaure*, under the heading 'Sculptures involontaires', each with a descriptive title drawing attention to details of the work. The piece presented here is a found bus ticket, which Dalí relates to the characteristic features of Art Nouveau. This is yet another allusion to his article 'Concerning the Terrifying and Edible Beauty of Art Nouveau Architecture', published in the same issue of *Minotaure*.

Observations

Dalí's original spelling of the title has been corrected: 'Numéro d'autobus roulé, trouvé dans la poche de veston d'un bureaucrate moyen (Crédit Lyonnais) ; caractéristiques les plus fréquentes de « Modern'Style »'.

For this study we have taken into consideration the Estate Brassai Succession homothetic posthumous print run.

Bibliography

- "Sculptures Involontaires", *Minotaure*, 12/1933, Paris, p. [68], ill., indirect image
- Brassai, *Conversations avec Picasso*, Gallimard, [Paris], 1964, p. 49
- Brassai, *Picasso and company*, Doubleday, New York, 1966, p. 36
- Salvador Dalí, *Oui : méthode paranoïaque-critique et autres textes*, Denoël, Gonthier, Paris, 1971, between pp. 96-97, ill.
- Rosalind Krauss, "The Photographic Conditions of Surrealism", *October*, vol. 19, Winter 1981, New York, NY, pp. [30]-31, ill., indirect image
- Brassai, *Les Artistes de ma vie*, Denoël, Paris, 1982, pp. 29, 34
- Paul Éluard, *Lettres à Gala: 1924-1948*, Gallimard, [Paris], 1984, pp. 222, 226-227
- Rosalind E. Krauss, Jane Livingston, *L'Amour fou : photography & surrealism*, The Corcoran Gallery of Art, Abbeville, Washington, D. C., New York, London, 1985, p. 19
- Paul Richard, "Twist of the Lens. Funny and Provocative Surrealistic Photos at the Corcoran", *The Washington Post*, 14/09/1985, Washington, D.C.
- Paul Éluard, *Cartas a Gala: 1924-1948*, Tusquets, Barcelona, 1986, pp. 189, 191-192
- *Regards sur Minotaure : la revue à tête de bête*, Musée d'art et d'histoire de Genève, Genève, 1987, pp. 214, 265, ill.
- Briony Fer, David Batchelor, Paul Wood, *Realism, rationalism, surrealism : art between the wars*, Yale University Press in association with the Open University, New Haven & London, 1993, pp. 209-210, ill., indirect image
- Matthew Gale, *Dada & surrealism*, Phaidon, London, 1997, p. 294
- Gérard Durozoi, *Histoire du mouvement surréaliste*, Hazan, Paris, 1997, p. [245], ill., indirect image
- *Surrealism: two private eyes, the Nesuhi Ertegun and Daniel Filipacchi collections*, Guggenheim Museum Publications, New York, 1999, p. 723
- Christopher Green, *Art in France : 1900- 1940*, Yale University Press, New Haven and London, 2000, pp. 136-137, ill., indirect image
- Rosalind E. Krauss, Jane Livingston, Dawn Ades, *Explosante - fixe : photographie & surréalisme*, Hazan, [S.I.], 2002, p. 19
- Gérard Durozoi, *History of the surrealist movement*, The University of Chicago Press, Chicago, London, 2002, p. [242], ill., indirect image
- Joan R. Kropf, *Dalí objects / Dalí fetishes*, Salvador Dalí Museum, Florida, 2002, pp. 11-12, ill., indirect image
- *Dalí Gaudí : La revolución del sentimiento de originalidad*, Fundació Caixa Catalunya, Fundació Gala-Salvador Dalí, Barcelona, Figueres, 2004, p. 43, ill., indirect image



- *Dalí Gaudí : The revolution of the sentiment of originality*, Fundació Caixa Catalunya, Fundació Gala-Salvador Dalí, Barcelona, Figueres, 2004, p. 43, ill., indirect image
- *Dalí Gaudí : La revolució del sentiment d'originalitat*, Fundació Caixa Catalunya, Fundació Gala-Salvador Dalí, Barcelona, Figueres, 2004, p. 43, ill., indirect image
- Mary Ann Caws, *Surrealism*, Phaidon, London, 2004, p. 98, ill., indirect image
- David Bates, *Photography and surrealism: sexuality, colonialism and social dissent*, I. B. Tauris, London, New York, 2004, pp. 84-85
- *Salvador Dalí i les arts : historiografia i crítica al segle XXI*, Publicacions de la Universitat de Barcelona, Barcelona, 2005, pp. 93-94
- *Surreal things : surrealism and design*, Victoria and Albert Museum, London, 2007, p. 62, ill., indirect image
- Guillermo Carnero, *Salvador Dalí y otros estudios sobre arte y vanguardia*, Institució Alfons el Magnànim - Diputació de València, [València], 2007, pp. 41, 54, 208
- *Cosas del surrealismo : surrealismo y diseño*, Victoria and Albert Museum, Guggenheim Bilbao, London, Bilbao, 2007, p. 62, ill., indirect image
- Ángel González García, *Pintar sin tener ni idea : y otros ensayos sobre arte*, Lampreave y Millán, Madrid, 2007, p. 198, ill.
- *Modern sculpture reader*, Henry Moore Institute, Leeds, 2007, p. 96
- Claude Gautrand, *Brassaï Paris : 1899-1984*, Taschen, Hong Kong, Köln, London, etc., 2008, pp. 24-25, ill.
- *La Subversion des images : surrealisme, photographie, film*, Centre Pompidou, Paris, 2009, pp. 346, 461, ill., indirect image
- *Salvador Dalí. Ritratto di un genio*, Abscondita, Milano, 2011, p. 119
- Anna Dezeuze, Julia Kelly, *Found sculpture and photography from surrealism to contemporary art*, Ashgate, Farnham, UK, Burlington, VT, 2013, pp. [1]-3, 5-9, [13]-18, 30, 40, 50, 61, 99-102, ill., indirect image
- Marc Aufraise, *Salvador Dalí et la photographie: portraits du surréalisme, 1927-1942*, Université Paris 1 Panthéon-Sorbonne, Paris, 2013, pp. 4, 14, 130, 145, 193-195, 204
- William Jeffett, Juan José Lahuerta, *Picasso-Dalí, Dalí-Picasso*, Museu Picasso, Salvador Dalí Museum, Barcelona, Sant Petersburg, 2014, p. 40, ill., indirect image
- Montse Aguer, Jean-Michel Bouhours, Laura Bartolomé, *Bust de dona retrospectiu 1933/1976-1977*, Fundació Gala-Salvador Dalí, Figueres, 2015, p. 19, ill., indirect image
- Montse Aguer, Jean-Michel Bouhours, Laura Bartolomé, *Busto de mujer retrospectivo 1933/1976-1977*, Fundació Gala-Salvador Dalí, Figueres, 2015, p. 18, ill., indirect image
- Montse Aguer, Jean-Michel Bouhours, Laura Bartolomé, *Buste de femme rétrospectif 1933/1976-1977*, Fundació Gala-Salvador Dalí, Figueres, 2015, p. 18, ill., indirect image
- Montse Aguer, Jean-Michel Bouhours, Laura Bartolomé, *Retrospective bust of a woman 1933/1976-1977*, Fundació Gala-Salvador Dalí, Figueres, 2015, p. 19, ill., indirect image
- Dawn Ades, *Writings on art and anti-art*, Ridinghouse, London, 2015, pp. 537-540, ill., indirect image
- Laura Bartolomé, "La bellesa involuntària de les escultures Dalí-Brassaï", *La Vanguardia*, Cultura/s, 02-08/04/2016, Barcelona, pp. 28, 30, 31, ill., indirect image
- *Dalí / Duchamp*, Royal Academy of Arts, The Dalí Museum, London, St. Petersburg, FL, 2017, p. 122, ill., indirect image

Related works



© Salvador Dalí, Fundació Gala-Salvador Dalí, VEGAP, Figueres, 2019 Brassai © Estate Brassai-RMN-Grand Palais

Cat. no. OE 3

«Symmetrically» rolled-up bus ticket, forming a rare mechanism of automatism with evident germs of stereotypes

1932-1933

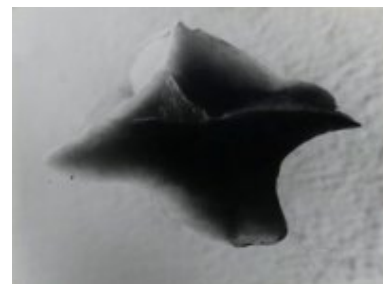


© Salvador Dalí, Fundació Gala-Salvador Dalí, VEGAP, Figueres, 2019 © Estate Brassai Succession

Cat. no. OE 4

Ornamental Modern Style bread escapes the soft stereotype

1932-1933



© Salvador Dalí, Fundació Gala-Salvador Dalí, VEGAP, Figueres, 2019 Brassai © Estate Brassai-RMN-Grand Palais

Cat. no. OE 5

Piece of soap presenting Modern Style automatic shapes, found in a washbasin

1932-1933

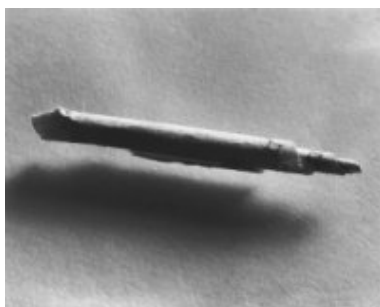


© Salvador Dalí, Fundació Gala-Salvador Dalí, VEGAP, Figueres, 2019 © Estate Brassai Succession - Philippe Ribeyrolles

Cat. no. OE 6

The morphological accident of the squeezed toothpaste does not escape the fine ornamental stereotype

1932-1933



© Salvador Dalí, Fundació Gala-Salvador Dalí, VEGAP, Figueres, 2019 © Estate Brassai Succession - Philippe Ribeyrolles

Cat. no. OE 7

Elementary rolling-up obtained from a «mental defective»

1932-1933



© Salvador Dalí, Fundació Gala-Salvador Dalí, VEGAP, Figueres, 2019 Brassai © Estate Brassai-RMN-Grand Palais

Cat. no. OE 9

The Envelope

ca. 1933



© Salvador Dalí, Fundació Gala-Salvador Dalí, VEGAP, Figueres, 2019 Brassai © Estate Brassai-RMN-Grand Palais

Cat. no. OE 10

Untitled. Automatic object

ca. 1933



© Salvador Dalí, Fundació Gala-Salvador Dalí, VEGAP, Figueres, 2019 Brassai © Estate Brassai-RMN-Grand Palais

Cat. no. OE 11

Piece of cotton wool instantly rolled up and abandoned (category of «aborted automatisms»)

ca. 1933



© Salvador Dalí, Fundació Gala-Salvador Dalí, VEGAP, Figueres, 2019 Brassai © Estate Brassai-RMN-Grand Palais

Cat. no. OE 12

Untitled. Automatic object

ca. 1933



© Salvador Dalí, Fundació Gala-Salvador Dalí, VEGAP, Figueres, 2019 Brassai © Estate Brassai-RMN-Grand Palais

Cat. no. OE 13

Shell

ca. 1933

Related content

2. Laura Bartolomé, Clara Silvestre, "La belleza involuntaria de las esculturas Dalí-Brassai", La Vanguardia, Cultura/s, 02-08/04/2016, Barcelona.

<http://hemeroteca.lavanguardia.com/edition.html?edition=Sup.+Cultura&bd=02&bm=04&by=2016&x=17&y=10&page=4>



Reproduction Rights

The copyright on Salvador Dalí's works, included those that are reproduced in this Web page, is held by the Spanish State and has been granted in exclusivity to the Fundació Gala-Salvador Dalí.

Pursuant to intellectual property laws in force, the total or partial reproduction, distribution, transformation, public communication, interactively making available to the public, as well as any other exploitation, by any means, of the works included in this Web page is prohibited.

Any exploitation of Salvador Dalí's works is subject to the prior application and clearance of the relevant licence issued by VEGAP (tel. 91 532 66 32 and 93 201 03 31 ; www.vegap.es). Copyright infringement will be prosecuted according to Laws.