



FUNDACIÓ
GALA-SALVADOR DALÍ

Cat. no. OE 3

Billet d'autobus roulé « symétriquement », forme très rare d'automatisme morphologique avec germes évidents de stéréotypie

«Symmetrically» rolled-up bus ticket, forming a rare mechanism of automatism with evident germs of stereotypes

Unique Original Work



© Salvador Dalí, Fundació Gala-Salvador Dalí, VEGAP, Figueres, 2019 Brassai © Estate Brassai-RMN-Grand Palais

Author:	Salvador Dalí i Domènech - Gyula Halász, alias Brassai
Date:	1932-1933
Technique:	Photograph and found object or object of automatic origin Gelatin silver print
Dimensions:	17 x 23,5 cm The dimensions correspond to the original print run of the photograph
Inscriptions:	On the back: (<i>Faite en / collaboration / avec Dali / en 1932.</i>) On the back: <i>billet d'autobus roulé</i>



Location: Centre Pompidou - Musée national d'art moderne -
Centre de création industrielle, Paris



Description

Between 1932-1933, Dalí took on the artistic direction of a series of photographs made with Gyula Halász, alias Brassai (1899-1984), in which certain objects, probably of automatic origin, acquire a new conceptual and artistic dimension, grounded in the essence of the photographic image. Several of these photographs were published anonymously in 1933 in the magazine *Minotaure*, under the heading 'Sculptures involontaires', each with a descriptive title drawing attention to details of the work. In this instance, the piece presented is a bus ticket, which has acquired through a process of automatism some of the properties of a stereotype. Dalí identified the stereotype as one of the characteristics of Art Nouveau in his article 'Concerning the Terrifying and Edible Beauty of Art Nouveau Architecture', published in the same issue of *Minotaure*.

Observations

The dimensions and the inscriptions correspond to the original print run of this photograph, which is conserved at the Centre de création industrielle in Paris.

Bibliography

- "Sculptures Involontaires", *Minotaure*, 12/1933, Paris, p. [68], ill., indirect image
- Brassai, *Conversations avec Picasso*, Gallimard, [Paris], 1964, p. 49
- Brassai, *Picasso and company*, Doubleday, New York, 1966, p. 36
- Salvador Dalí, *Oui : méthode paranoïaque-critique et autres textes*, Denoël, Gonthier, Paris, 1971, between pp. 96-97, ill.
- Rosalind Krauss, "The Photographic Conditions of Surrealism", *October*, vol. 19, Winter 1981, New York, NY, pp. [30]-31, ill., indirect image
- Brassai, *Les Artistes de ma vie*, Denoël, Paris, 1982, pp. 29, 34
- Paul Éluard, *Lettres à Gala: 1924-1948*, Gallimard, [Paris], 1984, pp. 222, 226-227
- Rosalind E. Krauss, Jane Livingston, *L'Amour fou : photography & surrealism*, The Corcoran Gallery of Art, Abbeville, Washington, D. C., New York, London, 1985, pp. 19, 39, ill.
- Paul Richard, "Twist of the Lens. Funny and Provocative Surrealistic Photos at the Corcoran", *The Washington Post*, 14/09/1985, Washington, D.C.
- Paul Éluard, *Cartas a Gala: 1924-1948*, Tusquets, Barcelona, 1986, pp. 189, 191-192
- *Regards sur Minotaure : la revue à tête de bête*, Musée d'art et d'histoire de Genève, Genève, 1987, pp. 213, 265, ill.
- Briony Fer, David Batchelor, Paul Wood, *Realism, rationalism, surrealism : art between the wars*, Yale University Press in association with the Open University, New Haven & London, 1993, pp. 209-210, ill., indirect image
- *Dalí joven, 1918-1930*, Museo Nacional Centro de Arte Reina Sofía, [Madrid], 1994, p. 276, ill.
- *Dalí, els anys joves : 1918-1930*, Generalitat de Catalunya. Departament de Cultura, Fundació Gala-Salvador Dalí, [Barcelona], Figueres, 1995, p. 276, ill.
- Matthew Gale, *Dada & surrealism*, Phaidon, London, 1997, p. 294
- Gérard Durozoi, *Histoire du mouvement surréaliste*, Hazan, Paris, 1997, p. [245], ill., indirect image
- *Surrealism: two private eyes, the Nesuhi Ertegün and Daniel Filipacchi collections*, Guggenheim Museum Publications, New York, 1999, p. 723
- Brassai, Centre Pompidou, Seuil, Paris, 2000, p. 135, ill.
- Christopher Green, *Art in France : 1900- 1940*, Yale University Press, New Haven and London, 2000, pp. 136-137, ill., indirect image
- *La Révolution surréaliste*, Éditions du Centre Pompidou, Paris, 2002, pp. 196, 431, ill.
- Rosalind E. Krauss, Jane Livingston, Dawn Ades, *Explosante - fixe : photographie & surréalisme*, Hazan, [S.I.], 2002, pp. 19, 39, ill.
- Gérard Durozoi, *History of the surrealist movement*, The University of Chicago Press, Chicago, London, 2002, p.



- [242], ill., indirect image
- *Surrealismus 1914 - 1944 : Dalí, Max Ernst, Magritte, Miró, Picasso...*, K20 Kunstsammlung Nordrhein-Westfalen, Hatje Cantz, Düsseldorf, Ostfildern-Ruit, 2002, pp. [200], [452] ill.
 - Joan R. Kropf, *Dalí objects / Dalí fetishes*, Salvador Dalí Museum, Florida, 2002, pp. 11-12, ill., indirect image
 - *Dalí. Cultura de masses*, Fundació La Caixa, Fundació Gala-Salvador Dalí, Barcelona, Figueres, 2004, p. 180, ill.
 - *Dalí. Mass Culture*, Fundació La Caixa, Fundació Gala-Salvador Dalí, Barcelona, Figueres, 2004, p. 180, ill.
 - *Dalí Gaudí : La revolución del sentimiento de originalidad*, Fundació Caixa Catalunya, Fundació Gala-Salvador Dalí, Barcelona, Figueres, 2004, p. 43, ill., indirect image
 - *Dalí Gaudí : The revolution of the sentiment of originality*, Fundació Caixa Catalunya, Fundació Gala-Salvador Dalí, Barcelona, Figueres, 2004, p. 43, ill., indirect image
 - *Dalí Gaudí : La revolució del sentiment d'originalitat*, Fundació Caixa Catalunya, Fundació Gala-Salvador Dalí, Barcelona, Figueres, 2004, p. 43, ill., indirect image
 - *Dalí. Cultura de masses*, Fundación La Caixa, Fundació Gala-Salvador Dalí, Barcelona, Figueres, 2004, p. 180, ill.
 - Mary Ann Caws, *Surrealism*, Phaidon, London, 2004, p. 98, ill.
 - David Bates, *Photography and surrealism: sexuality, colonialism and social dissent*, I. B. Tauris, London, New York, 2004, pp. 84-85, ill.
 - Cathrin Klingsöhr-Leroy, *Surrealismo*, Taschen, Köln, [etc.], 2004, p. 30, ill.
 - *París i els surrealistes*, Centre de Cultura Contemporània de Barcelona, Institut d'Edicions de la Diputació de Barcelona, Barcelona, 2005, p. 155, ill.
 - *Salvador Dalí i les arts : historiografia i crítica al segle XXI*, Publicacions de la Universitat de Barcelona, Barcelona, 2005, pp. 93-94
 - *It's all Dalí*, Museum Boijmans Van Beuningen, Rotterdam, 2005, p. 289, ill.
 - *Surreal things : surrealism and design*, Victoria and Albert Museum, London, 2007, p. 62, ill., indirect image
 - Guillermo Carnero, *Salvador Dalí y otros estudios sobre arte y vanguardia*, Institució Alfons el Magnànim - Diputació de València, [València], 2007, pp. 41, 54, 208
 - *Cosas del surrealismo : surrealismo y diseño*, Victoria and Albert Museum, Guggenheim Bilbao, London, Bilbao, 2007, p. 62, ill., indirect image
 - Ángel González García, *Pintar sin tener ni idea : y otros ensayos sobre arte*, Lampreave y Millán, Madrid, 2007, p. 196
 - *Modern sculpture reader*, Henry Moore Institute, Leeds, 2007, p. 96
 - Claude Gautrand, *Brassaï Paris : 1899-1984*, Taschen, Hong Kong, Köln, London, etc., 2008, p. 25, ill.
 - *La Subversion des images : surrealisme, photographie, film*, Centre Pompidou, Paris, 2009, pp. 346, 348, 461, ill.
 - Roxana Marcoci, Geoffrey Batchen, Tobia Bezzola, *The Original copy : photography of sculpture, 1839 to today*, The Museum of Modern Art, New York, 2010, p. 172, ill.
 - *Surreal objects : three-dimensional works from Dalí to Man Ray*, Hatje Cantz, Schirn Kunsthalle, Ostfildern, Frankfurt, 2011, p. 133, ill.
 - *Salvador Dalí. Ritratto di un genio*, Abscondita, Milano, 2011, p. 119
 - Catherine Grenier, *Salvador Dalí : l'invention de soi*, Flammarion, Paris, 2011, p. 196, ill.
 - Anna Dezeuze, Julia Kelly, *Found sculpture and photography from surrealism to contemporary art*, Ashgate, Farnham, UK, Burlington, VT, 2013, pp. [1]-3, 5-9, [13]-18, 30, 40, 50, 61, 99-102, ill., indirect image
 - Marc Aufraise, *Salvador Dalí et la photographie: portraits du surréalisme, 1927-1942*, Université Paris 1 Panthéon-Sorbonne, Paris, 2013, pp. 4, 14, 130, 145, 193-195, 204
 - Didier Ottinger, *Dictionnaire de l'objet surréaliste*, Gallimard, Centre Pompidou, Paris, 2013, pp. [245], 246, [307], ill.
 - William Jeffett, Juan José Lahuerta, *Picasso-Dalí, Dalí-Picasso*, Museu Picasso, Salvador Dalí Museum, Barcelona, Sant Petersburg, 2014, p. 40, ill., indirect image
 - Montse Aguer, Jean-Michel Bouhours, Laura Bartolomé, *Bust de dona retrospectiu 1933/1976-1977*, Fundació Gala-Salvador Dalí, Figueres, 2015, p. 19, ill., indirect image
 - Montse Aguer, Jean-Michel Bouhours, Laura Bartolomé, *Busto de mujer retrospectivo 1933/1976-1977*, Fundació Gala-Salvador Dalí, Figueres, 2015, p. 18, ill., indirect image
 - Montse Aguer, Jean-Michel Bouhours, Laura Bartolomé, *Buste de femme rétrospectif 1933/1976-1977*, Fundació



- Gala-Salvador Dalí, Figueres, 2015, p. 18, ill., indirect image
- Montse Aguer, Jean-Michel Bouhours, Laura Bartolomé, *Retrospective bust of a woman 1933/1976-1977*, Fundació Gala-Salvador Dalí, Figueres, 2015, p. 19, ill., indirect image
 - Dawn Ades, *Writings on art and anti-art*, Ridinghouse, London, 2015, pp. 537-540, ill., indirect image
 - Laura Bartolomé, "La bellesa involuntària de les escultures Dalí-Brassaï", *La Vanguardia*, Cultura/s, 02-08/04/2016, Barcelona, pp. 28, 30, 31, ill., indirect image
 - *Dalí / Duchamp*, Royal Academy of Arts, The Dalí Museum, London, St. Petersburg, FL, 2017, p. 122, ill., indirect image

Related works



© Salvador Dalí, Fundació Gala-Salvador Dalí, VEGAP, Figueres, 2019 © Estate Brassàï Succession

Cat. no. OE 4

Ornamental Modern Style bread escapes the soft stereotype

1932-1933



© Salvador Dalí, Fundació Gala-Salvador Dalí, VEGAP, Figueres, 2019 Brassàï © Estate Brassàï-RMN-Grand Palais

Cat. no. OE 5

Piece of soap presenting Modern Style automatic shapes, found in a washbasin

1932-1933

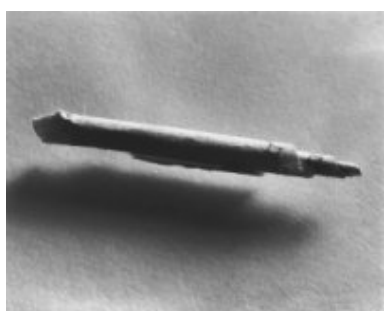


© Salvador Dalí, Fundació Gala-Salvador Dalí, VEGAP, Figueres, 2019 © Estate Brassàï Succession - Philippe Ribeyrolles

Cat. no. OE 6

The morphological accident of the squeezed toothpaste does not escape the fine ornamental stereotype

1932-1933

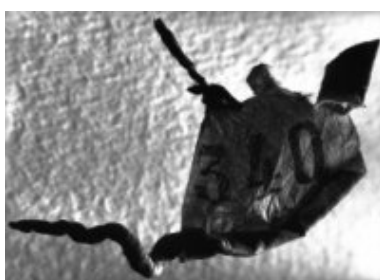


© Salvador Dalí, Fundació Gala-Salvador Dalí, VEGAP, Figueres, 2019 © Estate Brassàï Succession - Philippe Ribeyrolles

Cat. no. OE 7

Elementary rolling-up obtained from a «mental defective»

1932-1933



© Salvador Dalí, Fundació Gala-Salvador Dalí, VEGAP, Figueres, 2019 © Estate Brassàï Succession - Philippe Ribeyrolles

Cat. no. OE 8

Rolled-up bus ticket, found in the pocket of an average bureaucrat (Crédit Lyonnais); the most frequent characteristics of «Modern Style»

1932-1933



© Salvador Dalí, Fundació Gala-Salvador Dalí, VEGAP, Figueres, 2019 Brassàï © Estate Brassàï-RMN-Grand Palais

Cat. no. OE 9

The Envelope

ca. 1933



© Salvador Dalí, Fundació Gala-Salvador Dalí, VEGAP, Figueres, 2019 Brassàï © Estate Brassàï-RMN-Grand Palais

Cat. no. OE 10

Untitled. Automatic object

ca. 1933



© Salvador Dalí, Fundació Gala-Salvador Dalí, VEGAP, Figueres, 2019 Brassàï © Estate Brassàï-RMN-Grand Palais

Cat. no. OE 11

Piece of cotton wool instantly rolled up and abandoned (category of «aborted automatisms»)

ca. 1933



© Salvador Dalí, Fundació Gala-Salvador Dalí, VEGAP, Figueres, 2019 Brassàï © Estate Brassàï-RMN-Grand Palais

Cat. no. OE 12

Untitled. Automatic object

ca. 1933



© Salvador Dalí, Fundació Gala-Salvador Dalí, VEGAP, Figueres, 2019 Brassàï © Estate Brassàï-RMN-Grand Palais

Cat. no. OE 13

Shell

ca. 1933

Related content

1. Laura Bartolomé, Clara Silvestre, "La belleza involuntaria de las esculturas Dalí-Brassàï", La Vanguardia, Cultura/s, 02-08/04/2016, Barcelona.

<http://hemeroteca.lavanguardia.com/edition.html?edition=Sup.+Cultura&bd=02&bm=04&by=2016&x=17&y=10&page=4>



Reproduction Rights

The copyright on Salvador Dalí's works, included those that are reproduced in this Web page, is held by the Spanish State and has been granted in exclusivity to the Fundació Gala-Salvador Dalí.

Pursuant to intellectual property laws in force, the total or partial reproduction, distribution, transformation, public communication, interactively making available to the public, as well as any other exploitation, by any means, of the works included in this Web page is prohibited.

Any exploitation of Salvador Dalí's works is subject to the prior application and clearance of the relevant licence issued by VEGAP (tel. 91 532 66 32 and 93 201 03 31 ; www.vegap.es). Copyright infringement will be prosecuted according to Laws.